


Start Here ▼ ▼

IMPORTANT! This Quick Installation Guide provides the quick and easy way to set up the HWABN2 in Access Point or Bridge modes. If you need to use the other modes, please refer to the manual located on the CD.



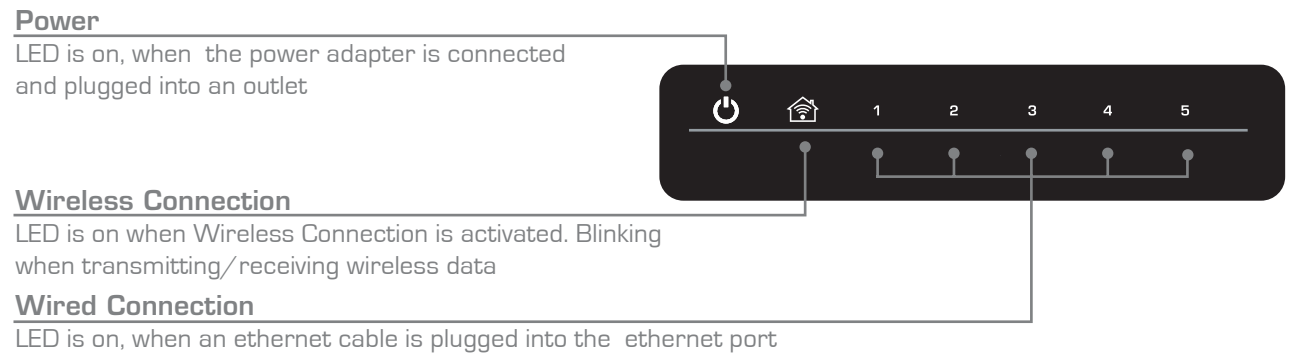
Package Contents

- 1x HWABN2 Access Point/Bridge Pro
- 1x 12V/1A Power Adapter
- 1x Ethernet Cable
- 1x Setup CD-ROM
- 2x 3dBi Omni-Directional Antennas

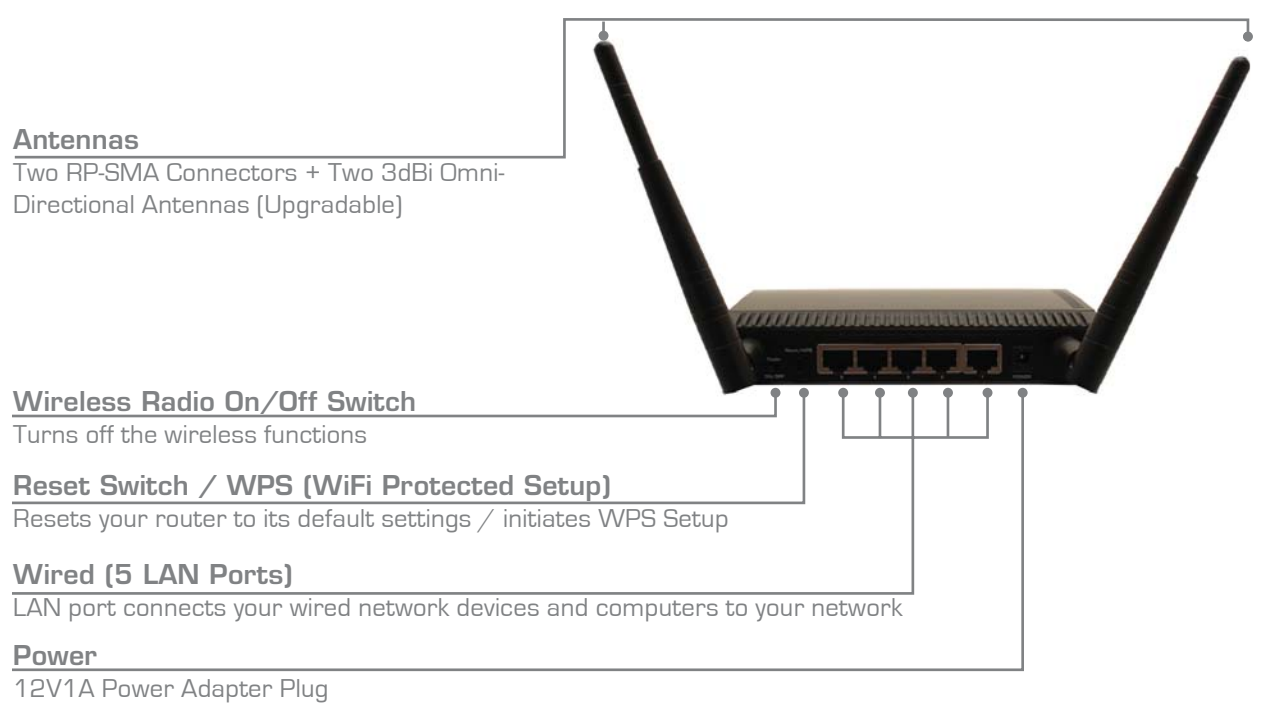
Requirements

- Wired or Wireless Internet Connection
- A Network Enabled Device (Computer, Smart Phone, or Tablet)
- Power Outlet

Front / LED Description



Back Panel Description



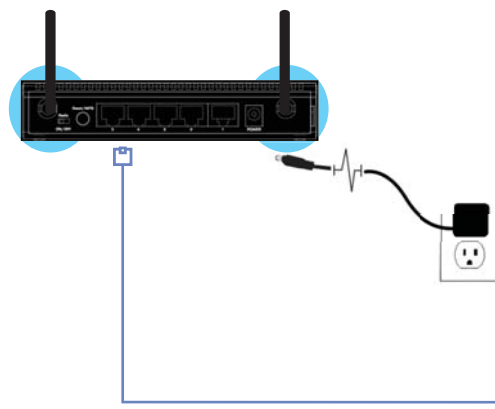
1 Setup the Device

A. Attach the Antennas

Locate the 2 antennas from your packaging and attach them to the Hi-Gain Wireless 300N Access Point/Bridge Pro.

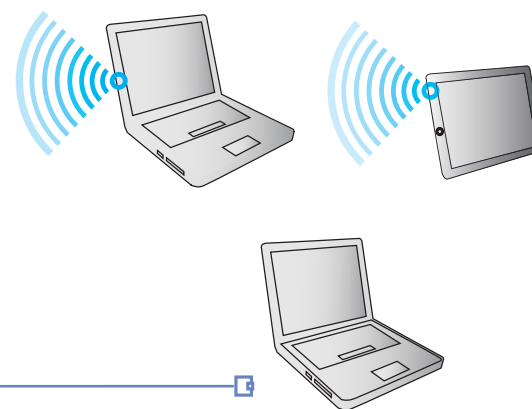
B. Plug in the Power Adapter

When you have completed the antenna setup, plug in the included power adapter into the nearest power outlet.



C. Access the HWABN2

You must access the HWABN2 to run the initial configuration.



Wireless: If you have a wireless enabled device, please proceed to Step 2

Wired: If you don't have a wireless enabled device, use an ethernet cable and connect your laptop or through one of the five LAN ports located on the back, Then, proceed to Step 3.

2 Configuring your Access Point/Bridge Pro using a Wireless Connection

Using a computer or a wireless device with wireless access, connect to the HWABN2 by searching for the wireless network named: **Hawking_HWABN2_AP_Pro**.

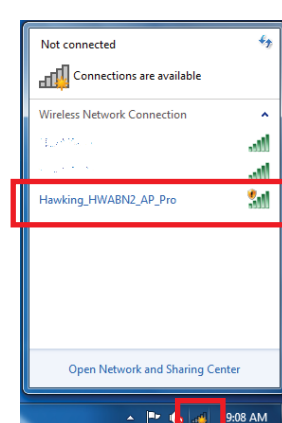
For Mac Users

Click on the Wi-Fi icon in the "apple" toolbar. Click on the "**Hawking_HWABN2_AP_Pro**" network from the drop-down menu. Then Continue to Step 3.



For Windows Users

When the "Wireless Network" Icon pops up on the lower right of the Windows taskbar, Click on the Icon and choose the "**Hawking_HWABN2_AP_Pro**" Network. Then Continue on to Step 3.



For Tablet or Smartphone Users

Go to your wireless setting, select the "**Hawking_HWABN2_AP_Pro**" Network. Then, go to Step 3.



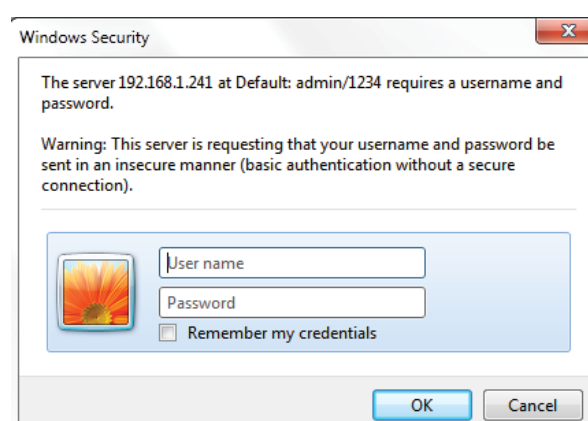
3 Login into the the HWABN2

Using the same computer/device, open a web browser and type in the following web address in the web address bar: **http://192.168.1.241**

Once the page loads, enter the following login information:

Login: admin
Password: 1234
Click **Login** to continue.

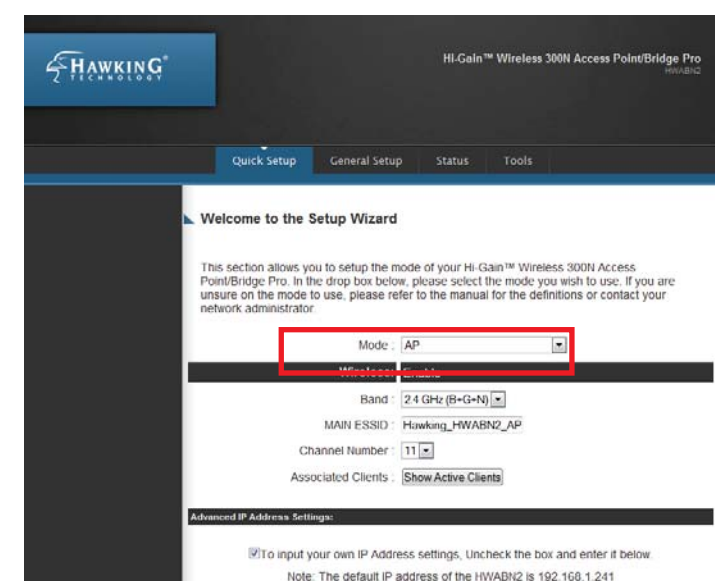
If the page doesn't load, please check if your JavaScript is enabled. Generally, this should be enabled by default. However, if it's not, please go to your your Browser Settings and enable JavaScript.



4 Choosing your Mode

In the drop down box, please select your mode of operation for the HWABN2. This quick installation guide will outline the basic Access Point and Station Infrastructure (Bridge) modes.

For other modes and features please refer to the manual on your CD.



5 Configuring Access Point mode or Station-Infrastructure (Bridge) mode

ACCESS POINT MODE

In the Access Point Mode, the HWABN2 broadcasts WiFi Signal from a wired Network (i.e. a wired Router) and allows your WiFi enabled devices to connect wirelessly to your Network. Note: The HWABN2 must be plugged into the router or network after setup.

A. In the drop down menu, choose "AP" (Access Point). The Main ESSID will be the wireless name of your network. Default: **Hawking_HWABN2_AP_Pro** Please change the name if you wish to use something unique. Click "Next" on the bottom of the page.

Mode :

Wireless: Enable

Band :

MAIN ESSID :

Channel Number :

Associated Clients :

B. Security Settings

Hawking Recommends you choose a security setting to secure your network from unauthorized users. In the drop down box, please select "WPA (pre-shared key)". In the pre-shared key field, please type in a password of at least 8 characters of your choice. If you wish to not use security or use a different type of security you can choose your selection from the drop down menu. Click "Apply".

Security Settings

Secure your home wireless network below. Turn on WEP or WPA by using Encryption Keys. This will prevent any unauthorized access to your home wireless network.

Wireless Security:

WPA Unicast Cipher Suite: WPA(TKIP) WPA2(AES) WPA2 Mixed

Pre-shared Key Format:

Pre-shared Key:

C. The HWABN2 will ask you if you wish to apply these settings. Click "Apply".

Save settings successfully

Please press APPLY button to restart the system to make the changes take effect.

Congratulations! You have set up the HWABN2 as an Access Point.

Please plug the HWABN2 into your network via ethernet cable for the device to function properly.



Overview Access Point Mode

STATION - INFRASTRUCTURE (BRIDGE MODE)

In this mode, the HWABN2 Bridge allows you to connect wired devices to an existing wireless router or access point. Note: Using this mode, the HWABN2 Bridge does not broadcast any WiFi signal. It can only link directly to the wireless source (see the overview diagram below).

A. In the drop down menu, choose "Station-Infrastructure"

Mode :

Wireless: Enable

Band :

MAIN ESSID :

Site Survey :

Click on "Select Site Survey" A new window will pop up. Select your network, click "Done". The site survey window will close and you will be returned to the first page. Choose "Next"

Wireless Site Survey

This page provides tool to scan the wireless network. If any Access Point or IBSS is found, you could choose to connect it manually when client mode is enabled.

Select	SSID	BSSID	Band	Channel	Connection Type	Encryption	Signal
<input type="radio"/>	I...	00:0e:3b:0f:c2:6e	(B+G+N)	3	AP	WPA2-PSK	42
<input type="radio"/>	F...	00:0e:3b:0f:c:38	(B+G+N)	3	AP	WPA2-PSK	20

B. If the network you are selecting has security, it will prompt you to put in a wireless security key. Be sure to type in the correct key! If you are unsure what your key is, please contact your network administrator or router manufacturer.

Wireless Security or Passphrase

Wireless Password

Display characters

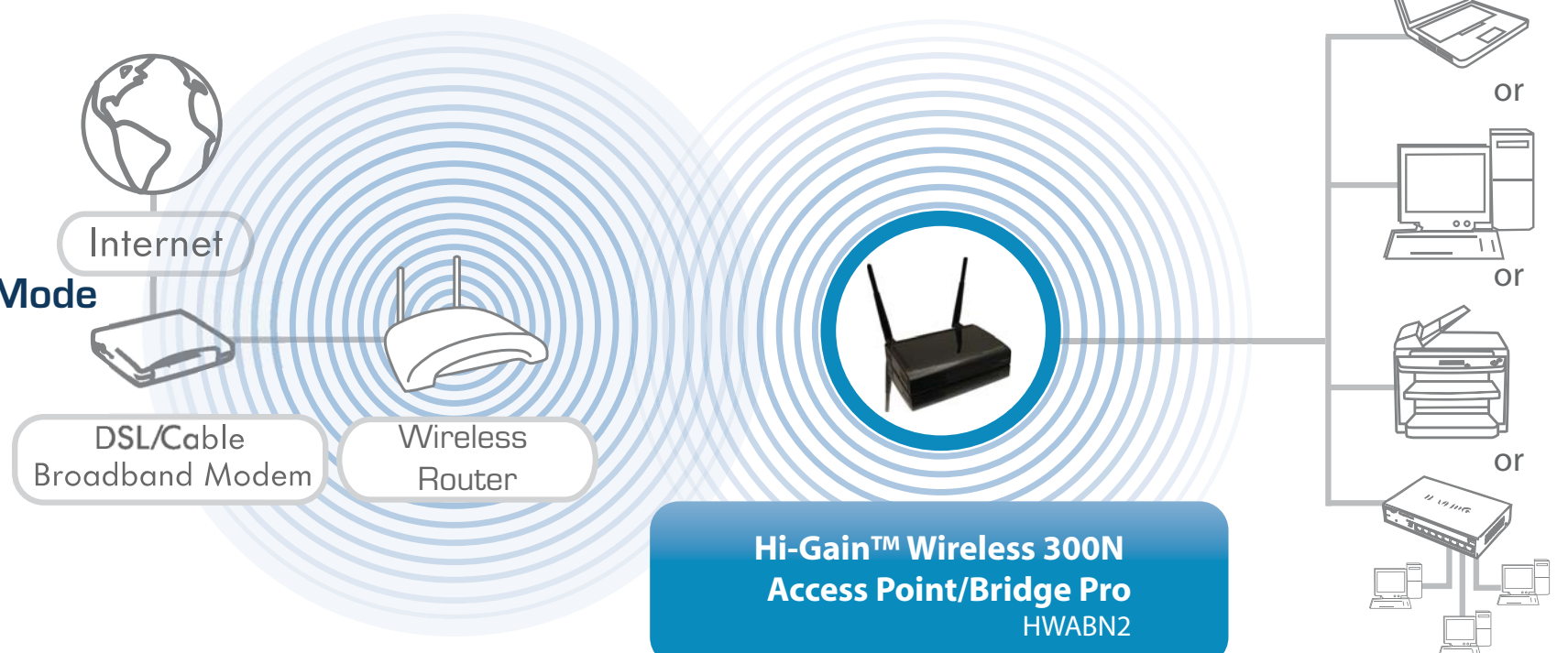
C. The HWABN2 will ask you if you wish to apply these settings. Click "Apply".

Save settings successfully

Please press APPLY button to restart the system to make the changes take effect.

Congratulations! You have set up the HWABN2 as a Bridge.

Please plug the HWABN2 into the device you wish to bridge via ethernet cable.



Overview Station Infrastructure (Bridge) Mode