

Start Here ▶▶▶

1 Check Package Contents & Requirements

Package Contents

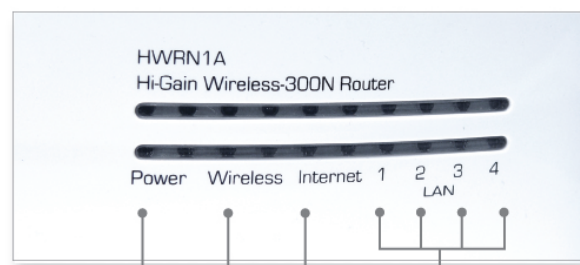
- 1x Wireless-300N Router
- 1x Power Adapter
- 3x Dipole Antennas
- 1x Setup CD -ROM
- 1x Quick Installation Guide (QIG)
- 1x Ethernet Cable

Requirements

- Internet Access
- PC/Mac Computer
- Power Outlet

2 Overview

LED DESCRIPTION



- Power** - LED is on, when the power adapter is connected and plugged in to an outlet.
- Wireless** - LED is on, (blinking) when wireless data activity is detected.
- Internet Connection** - LED is on, when there is an established connection with a cable/DSL modem.
- LAN Ports (1-4)** - LED is on, when a connection (with the specific port) between a PC and the router/network is detected.

Back Panel Description



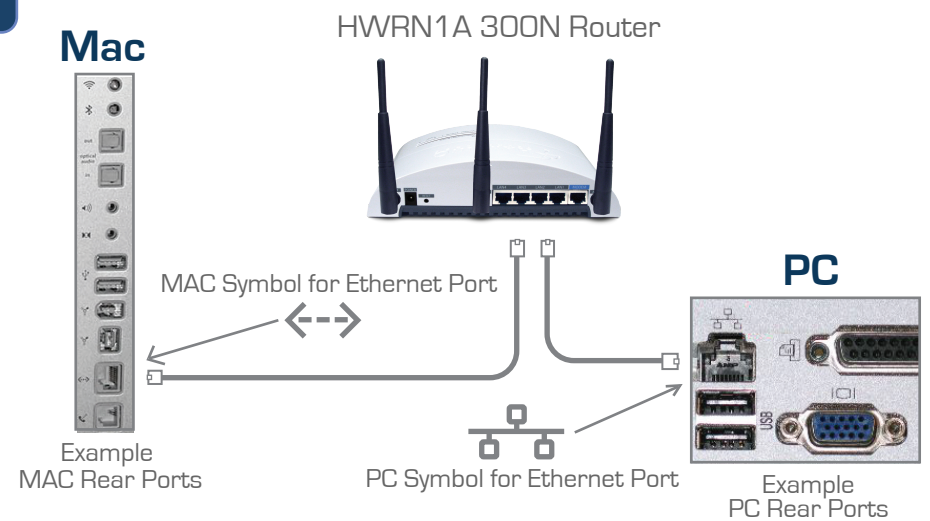
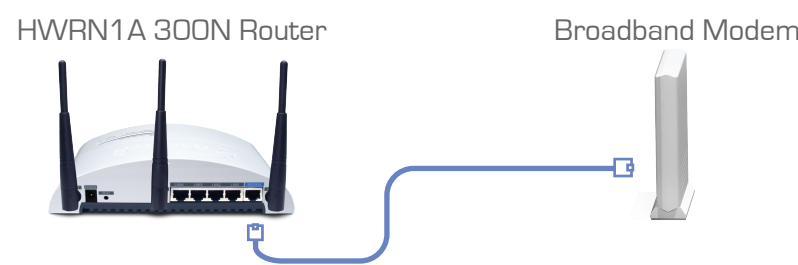
- Removable Antennas** - Removable Omni-Directional Antennas
- Power** - Power Adapter Plug
- Reset Switch** - Resets your router to its default settings
- LAN Ports** - Connects your wired network devices and computers to your network
- Modem Port** - For connecting directly to your Broadband Modem's ethernet port

3 Connecting the Router (to a Mac or PC)

1.) Connect the A/C power adapter to an electrical source, and then connect it to the 'Power' socket of the router.

2.) Connect your Broadband Modem to the Router's 'MODEM' port with an Ethernet cable. Reset your modem by unplugging it and plugging it back in

3.) Connect your PC or Mac to any of the 4 LAN ports located on the back of the router.



4a Configuring the Router with a PC (for configuring with a Mac, see Step 4b)

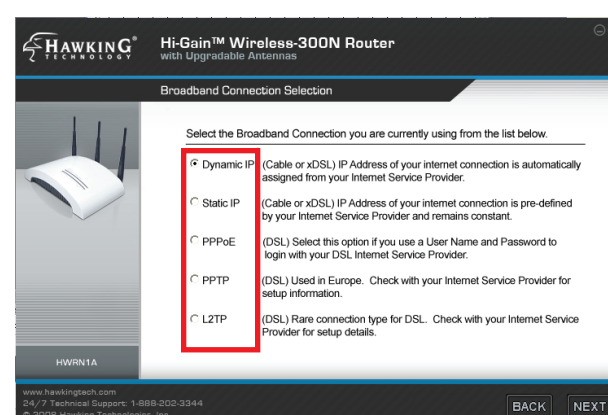
1.) Insert the Setup CD into the CD-ROM drive.



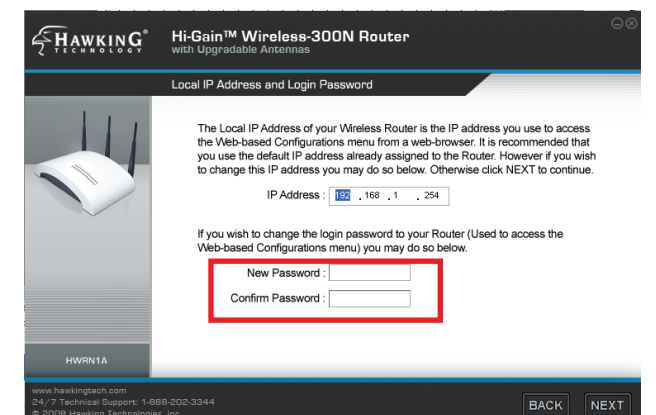
2.) When the auto-load page appears, click the Setup Wizard option on the right and follow the Setup directions...



3.) Scan for your router by clicking the 'Search' button. Once found, click the device to highlight it and click 'Next'.

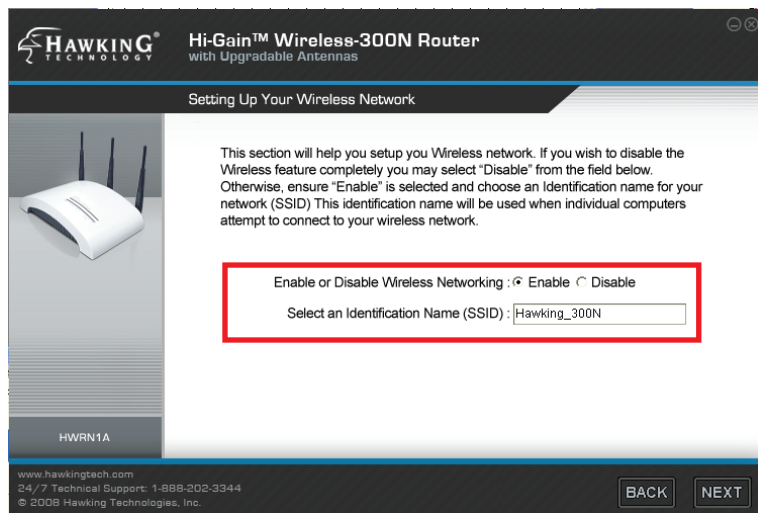


4.) Select your Internet Service Provider (ISP) Type from the list that appears. Then click 'Next'. Complete the information requested for your internet type in the following pages.



5.) Here, you can adjust your LAN IP settings. It is recommended, however, that you DO NOT change your LAN IP. You may also change your password login (default: 1234) settings here.

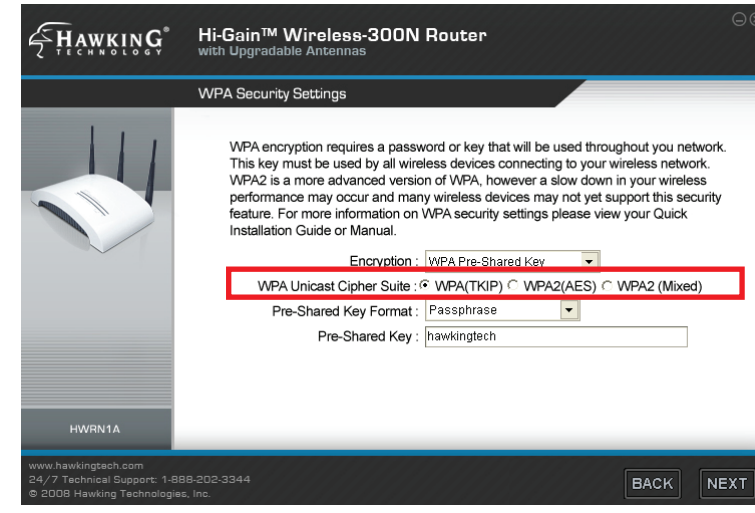
4a Cont'd



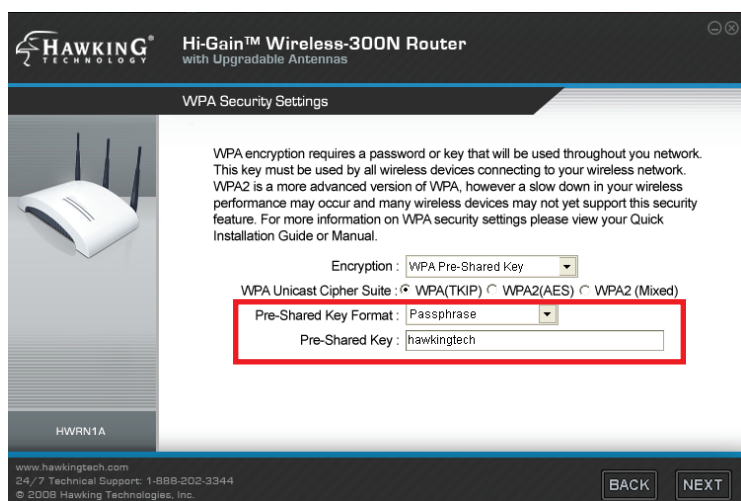
6.) Choose to setup your Wireless Network by either enabling or disabling it. Then decide on an ID name (default: Hawking_300N) for your router and enter it in. Click 'Next' when you have completed the page.



7.) If you would like to add Wireless Security, choose your security type and click 'Next'. This QIG will go over how to configure a basic security setup with a 'WPA pre-shared key' encryption.



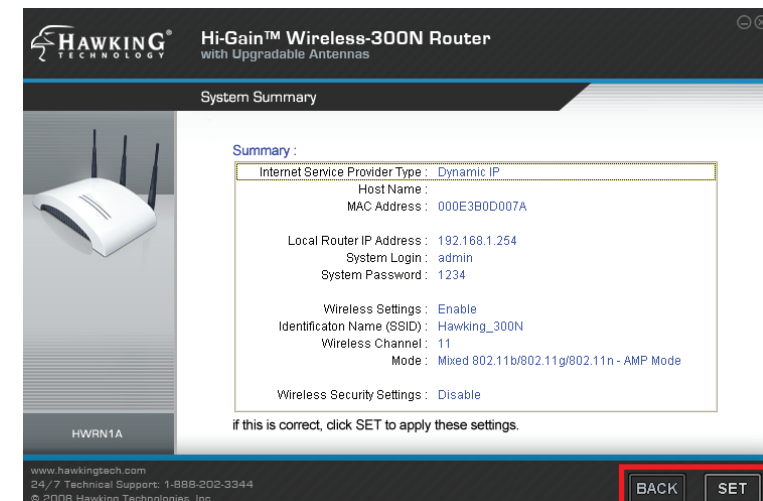
8.) In the 'WPA Unicast Cipher Suite' field select the option labeled as 'WPA (TKIP)'.



9.) In the 'Pre-shared Key Format' field, select 'Passphrase' from the drop down menu and below that enter at least an 8 character value for the 'Pre-shared Key'. E.g. hawkingtech



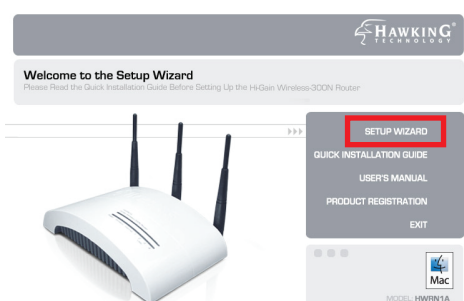
10.) After selecting your personalized passphrase, you may apply the Wireless Security settings by clicking 'Next'. If you wish to cancel your security settings, click 'Back' to the "Setting Up Wireless Security..." page and disable security settings. This will leave the network open to all users.



11.) This page displays your Setup Summary of the router and shows all configured settings. Click the 'Set' button to apply these settings to the router. The router will take some time to reboot, please be patient.

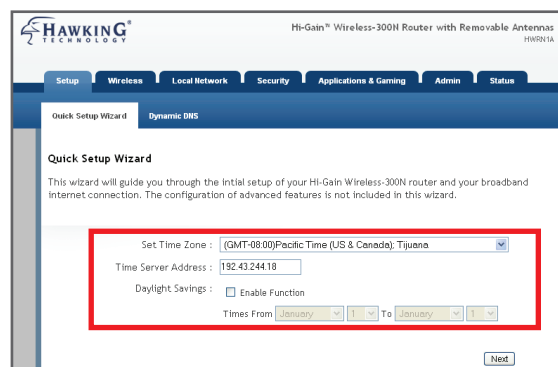
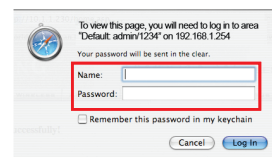
4b Configuring the Router with a Mac

1.) Insert the Setup CD into the computer's CD-ROM drive.

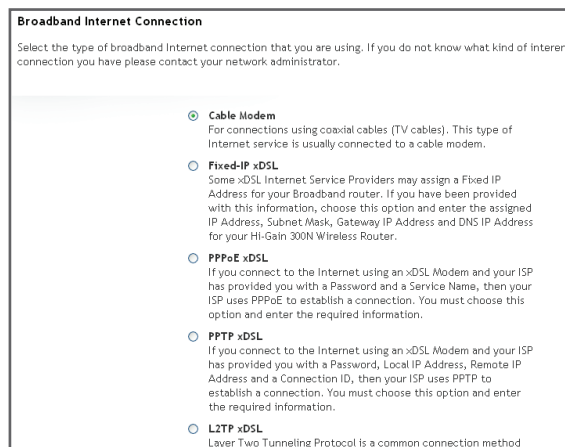


2.) When the auto-load page appears, click the Setup Wizard option on the right. Your web browser should automatically launch and open up to the router's web-based Quick Setup Wizard (URL address: <http://192.168.1.254>).

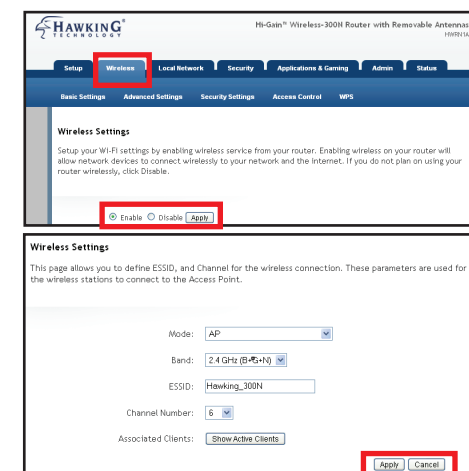
3.) When prompted by a pop-up window asking you to login, enter:
Name: admin
Password: 1234



4.) First, set the time zone in which you are using the router. When completed with the page, click 'Next'.



5.) Choose the the type of internet connection provided to you by your Internet Service Provider. The following page will ask you to complete the configuration of your specific internet connection. If you are unsure about some of the requirements, please contact your network administrator or ISP.



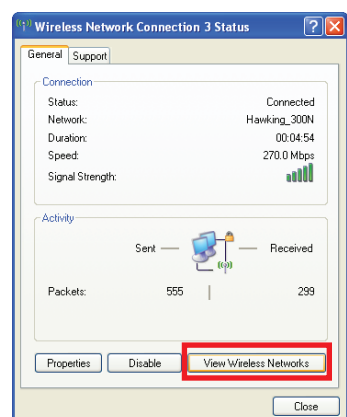
6.) For Wireless Settings click the 'Wireless' tab button at the top of the web user interface. Please choose to 'Enable' or 'Disable' wireless and click 'Apply'. It is recommended that you leave the default values as they are. Click 'Apply' when finished.

5 Connecting to your New Wireless Network (with a PC or Mac)

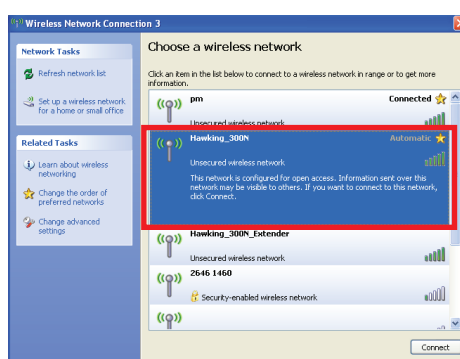
Connecting with PC



1.) To connect to your new wireless network using a PC, click the wireless network icon in your system tray.

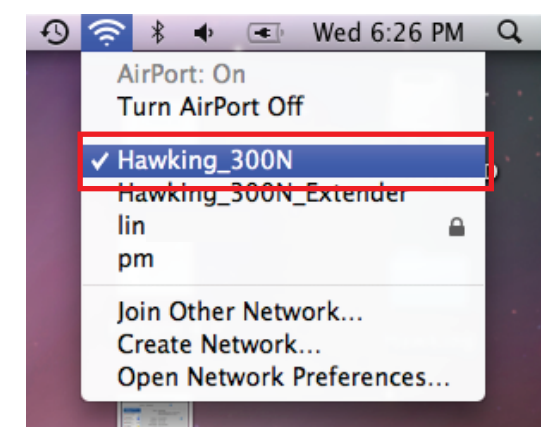


2.) Click the 'View Wireless Networks' button.



3.) Find your new network (default ID: Hawking_300N) and click on it twice or click 'Connect'. You can now enjoy your new wireless network!

Connecting with Mac



1.) Click the wireless network icon in the upper right hand corner of the Finder.
2.) From the drop-down menu select your wireless network (default ID: Hawking_300N). You can now enjoy your new wireless network!

NOTE: If you have WPA Security enabled you will be prompted to enter your password.