

DrayTek

Vigor2955

Dual-WAN SSL VPN Appliance



Quick Start Guide

V1.0

Vigor2955

Dual-WAN SSL VPN Appliance

Quick Start Guide

Version: 1.0

Date: 25/09/2009

Copyright Information

Copyright Declarations

Copyright 2009 All rights reserved. This publication contains information that is protected by copyright. No part may be reproduced, transmitted, transcribed, stored in a retrieval system, or translated into any language without written permission from the copyright holders.

Trademarks

The following trademarks are used in this document:

- Microsoft is a registered trademark of Microsoft Corp.
- Windows, Windows 95, 98, Me, NT, 2000, XP and Explorer are trademarks of Microsoft Corp.
- Apple and Mac OS are registered trademarks of Apple Inc.
- Other products may be trademarks or registered trademarks of their respective manufacturers.

Safety Instructions and Approval

Safety Instructions

- Read the installation guide thoroughly before you set up the router.
- The router is a complicated electronic unit that may be repaired only by authorized and qualified personnel. Do not try to open or repair the router yourself.
- Do not place the router in a damp or humid place, e.g. a bathroom.
- The router should be used in a sheltered area, within a temperature range of +5 to +40 Celsius.
- Do not expose the router to direct sunlight or other heat sources. The housing and electronic components may be damaged by direct sunlight or heat sources.
- Do not deploy the cable for LAN connection outdoor to prevent electronic shock hazards.
- Keep the package out of reach of children.
- When you want to dispose of the router, please follow local regulations on conservation of the environment.

Warranty

We warrant to the original end user (purchaser) that the router will be free from any defects in workmanship or materials for a period of two (2) years from the date of purchase from the dealer. Please keep your purchase receipt in a safe place as it serves as proof of date of purchase. During the warranty period, and upon proof of purchase, should the product have indications of failure due to faulty workmanship and/or materials, we will, at our discretion, repair or replace the defective products or components, without charge for either parts or labor, to whatever extent we deem necessary to restore the product to proper operating condition. Any replacement will consist of a new or re-manufactured functionally equivalent product of equal value, and will be offered solely at our discretion. This warranty will not apply if the product is modified, misused, tampered with, damaged by an act of God, or subjected to abnormal working conditions. The warranty does not cover the bundled or licensed software of other vendors. Defects which do not significantly affect the usability of the product will not be covered by the warranty. We reserve the right to revise the manual and online documentation and to make changes from time to time in the contents hereof without obligation to notify any person of such revision or changes.

Be a Registered Owner

Web registration is preferred. You can register your Vigor router via <http://www.draytek.com>.

Firmware & Tools Updates

Due to the continuous evolution of DrayTek technology, all routers will be regularly upgraded. Please consult the DrayTek web site for more information on newest firmware, tools and documents.

<http://www.draytek.com>

European Community Declarations

Manufacturer: DrayTek Corp.
Address: No. 26, Fu Shing Road, HuKou Township, HsinChu Industrial Park, Hsin-Chu, Taiwan 303
Product: Vigor2955 Router

DrayTek Corp. declares that Vigor2955 is in compliance with the following essential requirements and other relevant provisions of R&TTE Directive 1999/5/EEC.

The product conforms to the requirements of Electro-Magnetic Compatibility (EMC) Directive 2004/108/EC by complying with the requirements set forth in EN55022/Class A and EN55024/Class A.

The product conforms to the requirements of Low Voltage (LVD) Directive 2006/95/EC by complying with the requirements set forth in EN60950-1.

Regulatory Information

Federal Communication Commission Interference Statement

This equipment has been tested and found to comply with the limits for a Class A digital device, pursuant to Part 15 of the FCC Rules. These limits are designed to provide reasonable protection against harmful interference in a residential installation. This equipment generates, uses and can radiate radio frequency energy and, if not installed and used in accordance with the instructions, may cause harmful interference to radio communications. However, there is no guarantee that interference will not occur in a particular installation. If this equipment does cause harmful interference to radio or television reception, which can be determined by turning the equipment off and on, the user is encouraged to try to correct the interference by one of the following measures:

- Reorient or relocate the receiving antenna.
- Increase the separation between the equipment and receiver.
- Connect the equipment into an outlet on a circuit different from that to which the receiver is connected.
- Consult the dealer or an experienced radio/TV technician for help.

This device complies with Part 15 of the FCC Rules. Operation is subject to the following two conditions:

- (1) This device may not cause harmful interference, and
- (2) This device may accept any interference received, including interference that may cause undesired operation.

Taiwanese BSMI (Bureau of Standards, Metrology and Inspection) A Warning:

Warning: This device might cause interference of radio frequency under the environment of dwelling. In such condition, the users might be asked to adopt some proper strategies.

Please visit <http://www.draytek.com/user/AboutRegulatory.php>.



This product is designed for POTS network throughout the EC region and Switzerland with restrictions in France. Please see the user manual for the applicable networks on your product.

Table of Contents

1. Introduction.....	1
1.1 Panel Explanation	2
1.2 Package Content.....	3
2. Installing Your Router.....	5
2.1 Hardware Installation.....	5
2.2 Printer Installation.....	6
3. Configuring Web Pages	11
3.1 Basic Configuration	11
4. Trouble Shooting	17
4.1 Checking the Hardware Status.....	17
4.2 Checking the Network Connection Settings on Your Computer	18
4.3 Pinging the Router from Your Computer	20
4.4 Checking the ISP Settings.....	21
4.5 Resetting the Router to Factory Default Settings.....	23
4.6 Contacting Your Dealer	24

1. Introduction

Vigor2955 is a broadband router with dual-WAN interface. It provides policy-based load-balance, fail-over and BoD (Bandwidth on Demand), also it integrates IP layer QoS, NAT session/bandwidth management to help users control works well with large bandwidth.

By adopting hardware-based VPN platform, hardware encryption of AES/DES/3DS and hardware key hash of SHA-1/MD5, the router increases the performance of VPN greatly, and offers several protocols (such as IPSec/PPTP/L2TP) with up to 200 VPN tunnels.

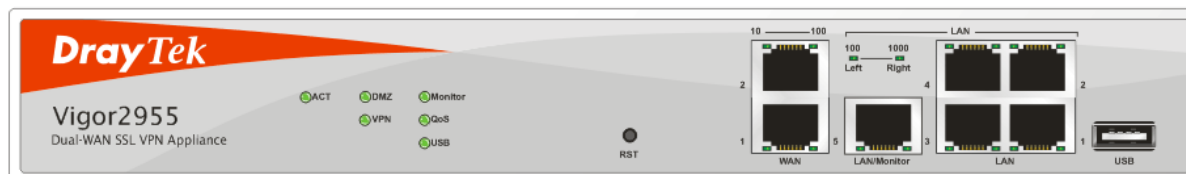
The object-originated design used in SPI (Stateful Packet Inspection) firewall allows users to set firewall policy with ease. CSM (Content Security Management) provides users control and management in IM (Instant Messenger) and P2P (Peer to Peer) more efficiency than before. By the way, DoS/DDoS prevention and URL/Web content filter.

In addition, Vigor2955 supports USB interface for connecting USB printer to share printer or 3G USB Modem for accessing Internet.

Features for Vigor2955

- Dual WAN: Support policy-based load-balance, bandwidth on demand and internet connection failover
- Gigabit Ethernet LAN: 1000Mbps fast LAN traffic switching
- Object-originated Firewall: Provide SPI, DoS/DDoS prevention, CSM(Content Security Management)
- Content Filter: URL and Web (powered by SurfControl Content filtering)
- VPN: Hardware-based VPN support up to 200 VPN Tunnels
- Bandwidth Management: IP layer QoS and NAT session/bandwidth management

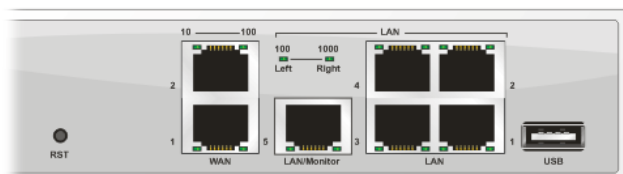
1.1 Panel Explanation





LED	Status	Explanation
ACT (Activity)	Blinking	The router is powered on and running normally.
	Off	The router is powered off.
DMZ	On	DMZ Host is specified in certain site.
Monitor	On	LAN traffic monitor is active.
VPN	On	The VPN tunnel is launched.
	Off	The VPN tunnel is closed.
QoS	On	The QoS function is active.
USB	On	The USB device is active.

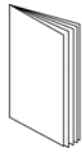
LED on Connector

WAN	10 (left LED)	On	The port is connected with 10Mbps.
		Off	The port is disconnected.
		Blinking	The data is transmitting.
	100 (right LED)	On	The port is connected with 100Mbps.
		Off	The port is disconnected.
		Blinking	The data is transmitting.
LAN/Monitor LAN (1 ~ 4)	100 (left LED)	On	The port is connected with 100Mbps.
		Off	The port is disconnected.
		Blinking	The data is transmitting.
	1000 (right LED)	On	The port is connected with 1000Mbps.
		Off	The port is disconnected.
		Blinking	The data is transmitting.

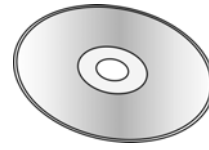


Interface	Description
RST (Factory Reset)	Restore the default settings. Usage: Turn on the router (ACT LED is blinking). Press the hole and keep for more than 5 seconds. When you see the ACT LED begins to blink rapidly than usual, release the button. Then the router will restart with the factory default configuration.
WAN(1/2)	Connector for remote networked devices.
LAN/Monitor	Connector for local networked devices.
LAN (1-4)	Connector for local networked devices.
USB	Connector for USB device (e.g., printer).
	Connector for a power cord with 100-240VAC (inlet).
	Power Switch.

1.2 Package Content



1 Quick Start Guide



2 CD



3 RJ-45 Cable (Ethernet)



4 UK-type power cord

* The maximum power consumption is *17 Watt*.

This page is left blank.

2. Installing Your Router

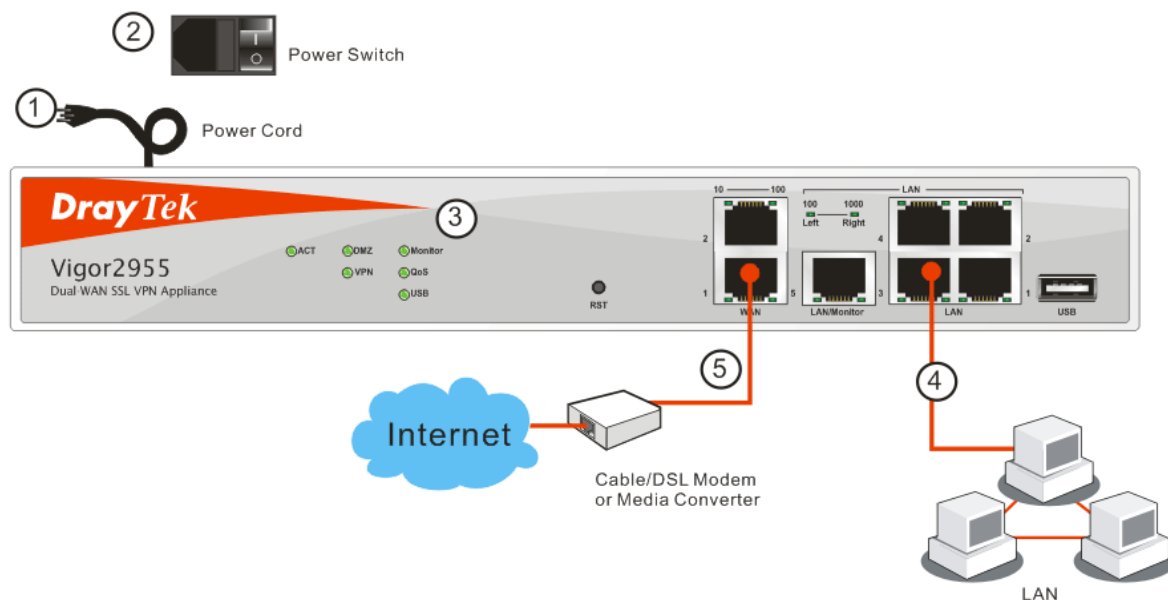
This section will guide you to install the router through hardware connection and configure the router's settings through web browser.

2.1 Hardware Installation

Before starting to configure the router, you have to connect your devices correctly.

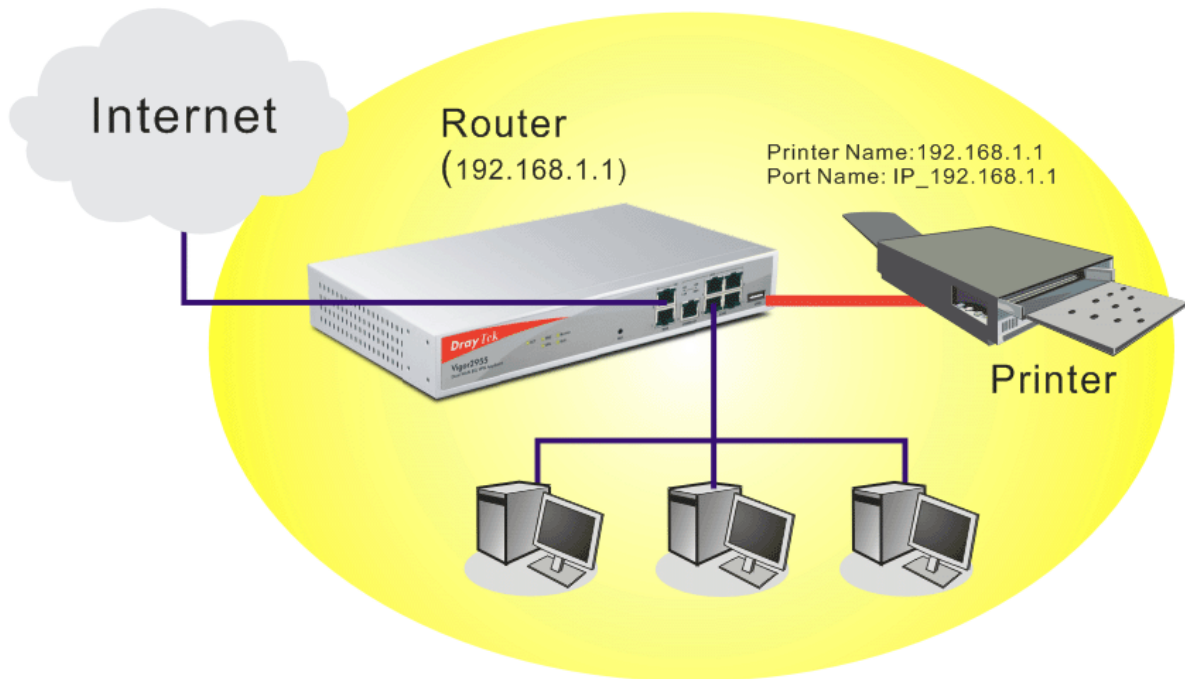
1. Connect the power cord to the router's power port on the rear panel, and the other side into a wall outlet.
2. Power on the device by pressing down the power switch on the rear panel.
3. The system starts to initiate. After completing the system test, the **ACT** LED will light up and start blinking.
4. Connect one end of an Ethernet cable (RJ-45) to one of the **LAN** ports of the router and the other end of the cable (RJ-45) into the Ethernet port on your computer (that device also can connect to other computers to form a small area network). The **LAN** LED (Left or Right) will light up according to the network card feature (1000 or 100) of the device that it connected.
5. Connect a cable Modem/DSL Modem/Media Converter (depends on your requirement) to any WAN port of router with Ethernet cable (RJ-45). The **WAN1/WAN2** LED (Left or Right) will light up according to the network card feature (100 or 10) of the device that it connected.

(For the detailed information of LED status, please refer to section 1.1.)



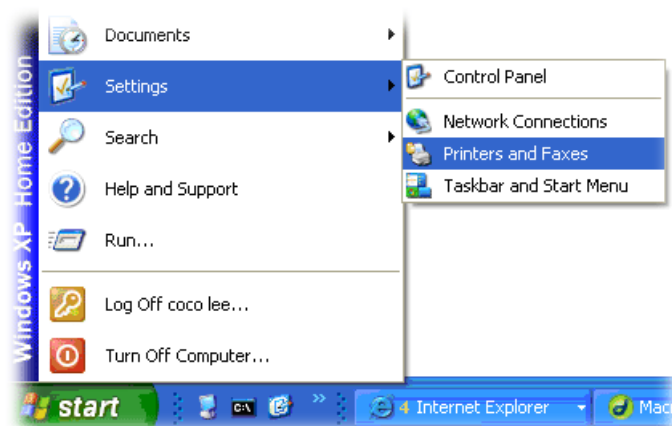
2.2 Printer Installation

You can install a printer onto the router for sharing printing. All the PCs connected this router can print documents via the router. The example provided here is made based on Windows XP/2000. For Windows 98/SE, please visit www.draytek.com.

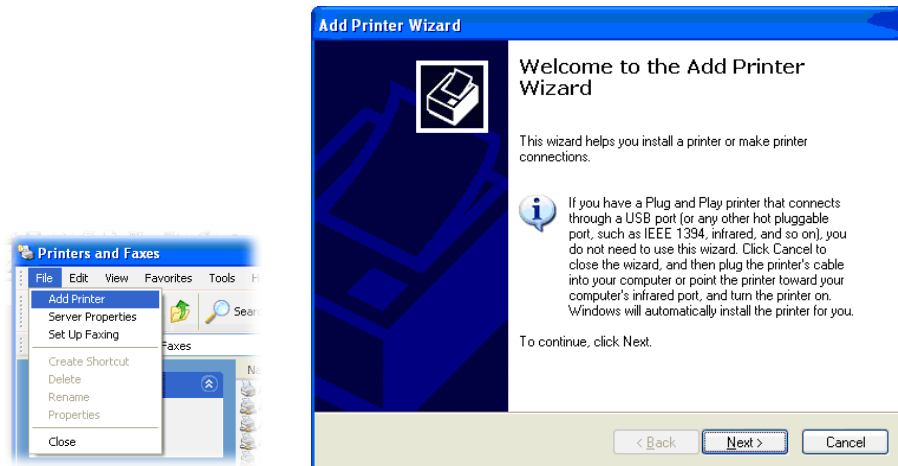


Before using it, please follow the steps below to configure settings for connected computers.

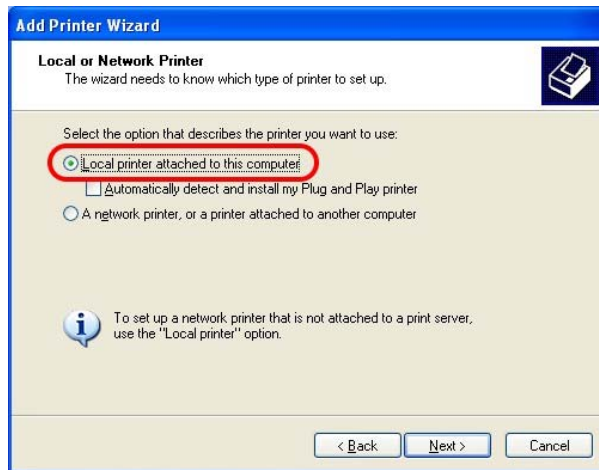
1. Connect the printer with the router through USB port.
2. Open **Start->Settings-> Printer and Faxes**.



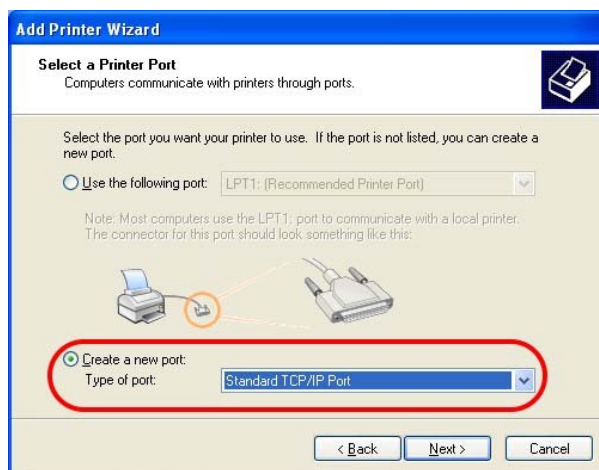
3. Open **File->Add a New Computer**. A welcome dialog will appear. Please click **Next**.



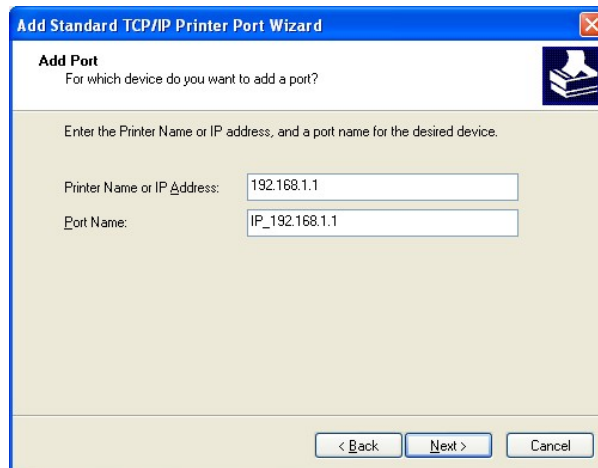
4. Click **Local printer attached to this computer** and click **Next**.



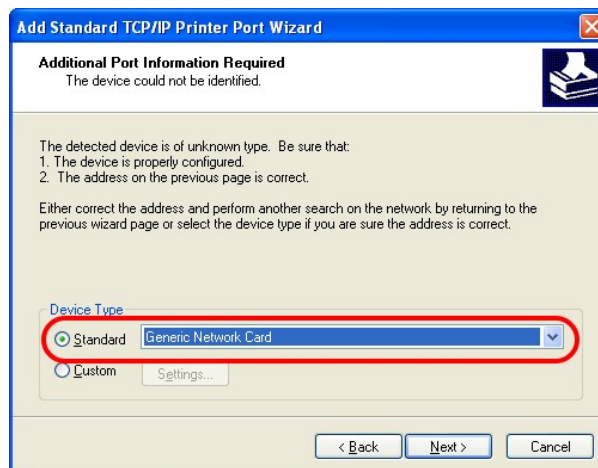
5. In this dialog, choose **Create a new port Type of port** and use the drop down list to select **Standard TCP/IP Port**. Click **Next**.



6. In the following dialog, type **192.168.1.1** (router's LAN IP) in the field of **Printer Name or IP Address** and type **IP_192.168.1.1** as the port name. Then, click **Next**.



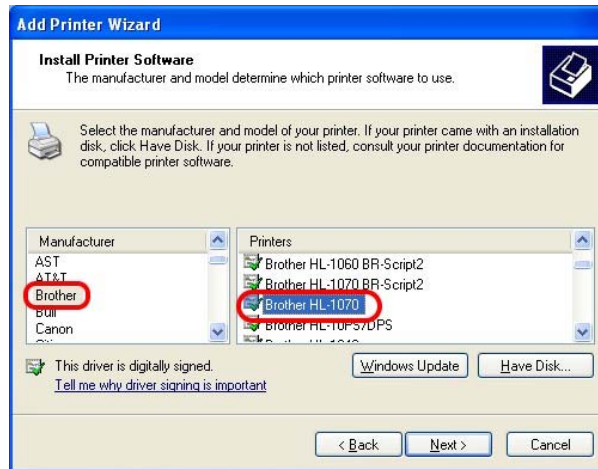
7. Click **Standard** and choose **Generic Network Card**.



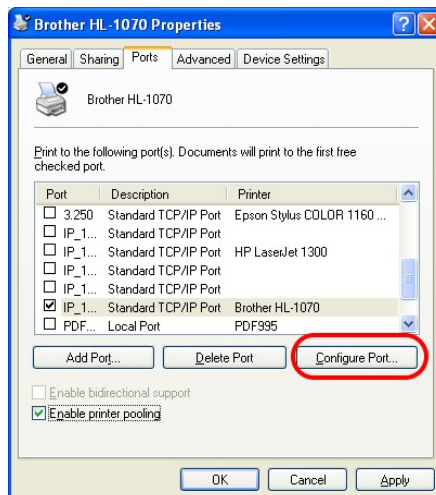
8. Then, in the following dialog, click **Finish**.



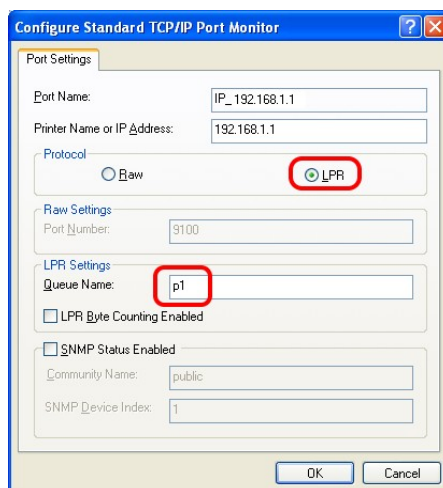
- Now, your system will ask you to choose right name of the printer that you installed onto the router. Such step can make correct driver loaded onto your PC. When you finish the selection, click **Next**.



- For the final stage, you need to go back to **Control Panel-> Printers** and edit the property of the new printer you have added.

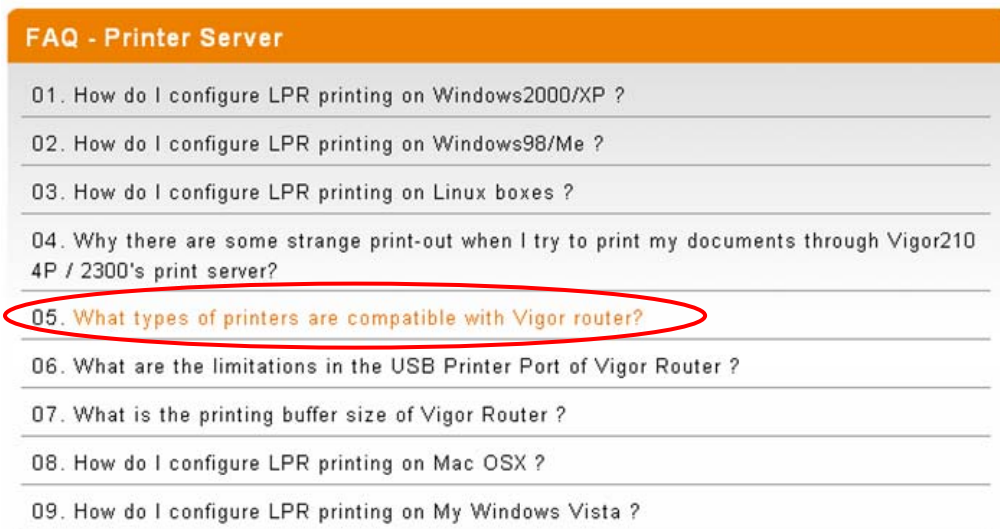
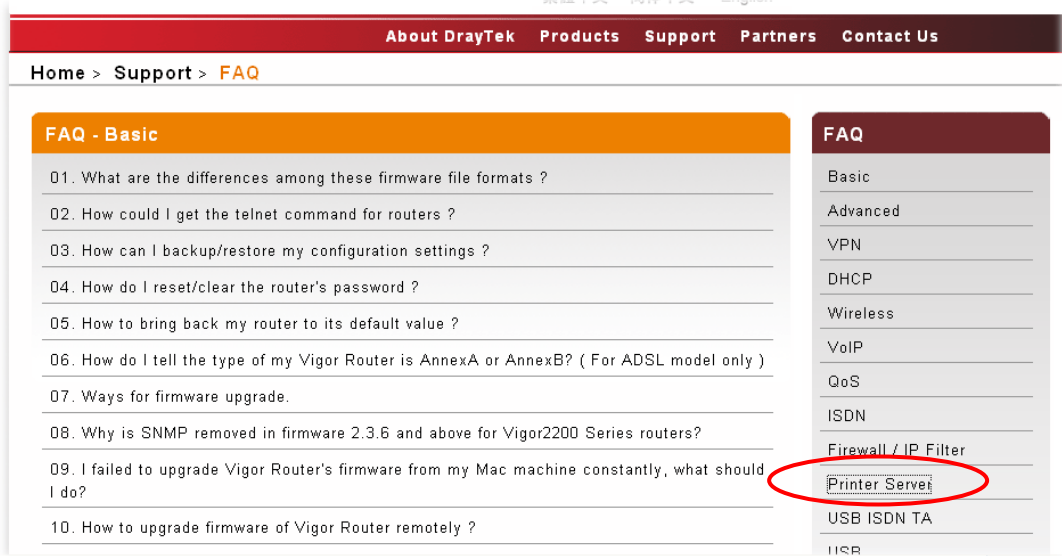


- Select "**LPR**" on Protocol, type **p1** (number 1) as Queue Name. Then click **OK**. Next please refer to the red rectangle for choosing the correct protocol and UPR name.



The printer can be used for printing now. Most of the printers with different manufacturers are compatible with vigor router.

Note 1: Some printers with the fax/scanning or other additional functions are not supported. If you do not know whether your printer is supported or not, please visit www.draytek.com to find out the printer list. Open **Support >FAQ**; find out the link of **Printer Server** and click it; then click the **What types of printers are compatible with Vigor router?** link.



Note 2: Vigor router supports printing request from computers via LAN ports but not WAN port.

3. Configuring Web Pages

3.1 Basic Configuration

The **Quick Start Wizard** is designed for you to easily set up your router for Internet access. You can directly access the **Quick Start Wizard** via Web Configurator.

1. Make sure your PC connects to the router correctly.



Notice: You may either simply set up your computer to get IP dynamically from the router or set up the IP address of the computer to be the same subnet as **the default IP address of Vigor router 192.168.1.1**. For the detailed information, please refer to the later section - Trouble Shooting of the guide.

2. Open a web browser on your PC and type **http://192.168.1.1**. A pop-up window will open to ask for username and password. Please type “admin” as the username and leave blank for the password on the window. Next click **OK** for next screen.

Username

Password

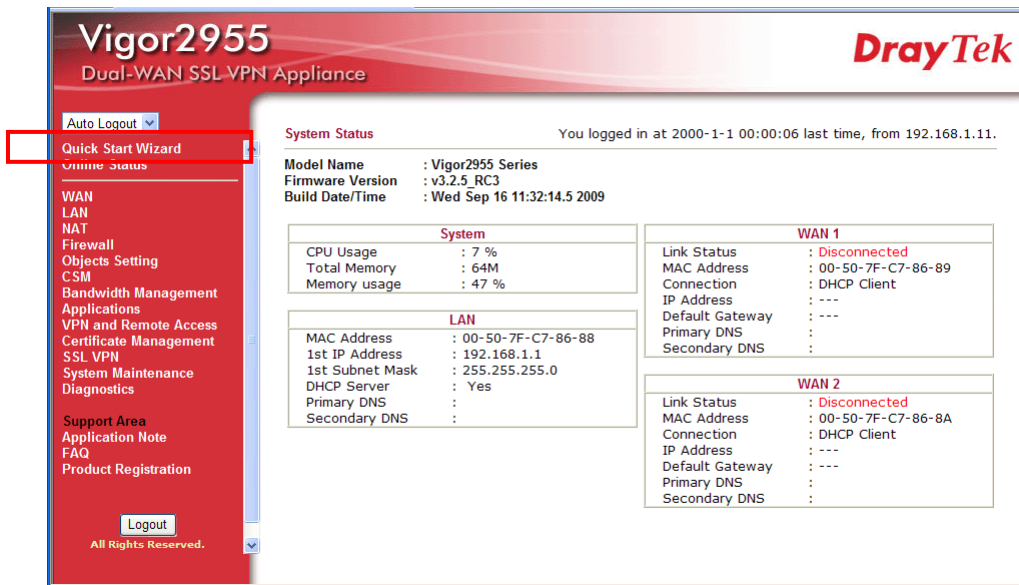
Login

Copyright©, DrayTek Corp. All Rights Reserved. **DrayTek**



Notice: If you fail to access to the web configuration, please go to “Trouble Shooting” for detecting and solving your problem.

- Now, the **Main Screen** will pop up. Click **Quick Start Wizard**.



- Enter the login password on the field of **New Password** and retype it on the field of **Confirm Password**. Then click **Next** to continue.

Quick Start Wizard

Enter login password

Please enter an alpha-numeric string as your **Password** (Max 23 characters).

New Password

Confirm Password

- On the next page as shown below, please select the WAN interface that you use. Choose **Auto negotiation** as the physical type for your router. Then click **Next** for next step.

Quick Start Wizard

Select WAN Interface

Select WAN Interface:

Display Name:

Physical Mode: Ethernet

Physical Type:

6. On the next page as shown below, please select the appropriate Internet access type according to the information from your ISP. For example, you should select PPPoE mode if the ISP provides you PPPoE interface. Then click **Next** for next step.

Quick Start Wizard

Connect to Internet

WAN 1
Select one of the following Internet Access types provided by your ISP.

- PPPoE
- PPTP
- L2TP
- Static IP
- DHCP

< Back Next > Finish Cancel

PPPoE: if you click PPPoE or PPPoA as the protocol, please manually enter the Username/Password provided by your ISP. Then click **Next**.

Quick Start Wizard

PPPoE Client Mode

WAN 1
Enter the user name and password provided by your ISP.

User Name 84005676@hinet.net

Password ●●●●●●

Confirm Password ●●●●●●

< Back Next > Finish Cancel

PPTP/L2TP: if you click PPTP/L2TP, you will get the following page. Please type in all the information originally provided by your ISP. Then click **Next** for next step.

Quick Start Wizard

PPTP Client Mode

WAN 1
Enter the user name, password, WAN IP configuration and PPTP server IP provided by your ISP.

User Name	<input type="text"/>
Password	<input type="password"/>
Confirm Password	<input type="password"/>
WAN IP Configuration	
<input checked="" type="radio"/> Obtain an IP address automatically	
<input type="radio"/> Specify an IP address	
IP Address	<input type="text"/>
Subnet Mask	<input type="text"/>
Gateway	<input type="text"/>
Primary DNS	<input type="text"/>
Second DNS	<input type="text"/>
PPTP Server	<input type="text"/>

< Back Next > Finish Cancel

Static IP: if you click Static IP, you will get the following page. Please type in the IP address information originally provided by your ISP. Then click **Next** for next step.

Quick Start Wizard

Static IP Client Mode

WAN 1
Enter the Static IP configuration provided by your ISP.

WAN IP	<input type="text" value="172.16.3.229"/>
Subnet Mask	<input type="text" value="255.255.0.0"/>
Gateway	<input type="text" value="172.16.3.4"/>
Primary DNS	<input type="text" value="168.95.1.1"/>
Secondary DNS	<input type="text"/> (optional)

< Back Next > Finish Cancel

DHCP: if you click DHCP, you will get the following page. Simply click **Next** to continue.

Quick Start Wizard

DHCP Client Mode

WAN 1

If your ISP requires you to enter a specific host name or specific MAC address, please enter it in.

Host Name (optional)

MAC 00 - 50 - 7F - C7 - 86 - 89 (optional)

7. Now you can see the following screen. It indicates that the setup is complete. Different types of connection modes will have different summary. Click **Finish** and then restart the router. Afterward, you will enjoy surfing on the Internet.

Quick Start Wizard

Please confirm your settings:

WAN Interface: WAN1
Physical Mode: Ethernet
Physical Type: Auto negotiation
Internet Access: DHCP

Click **Back** to modify changes if necessary. Otherwise, click **Finish** to save the current settings and restart the Vigor router.

This page is left blank.

4. Trouble Shooting

This section will guide you to solve abnormal situations if you cannot access into the Internet after installing the router and finishing the web configuration. Please follow sections below to check your basic installation status stage by stage.

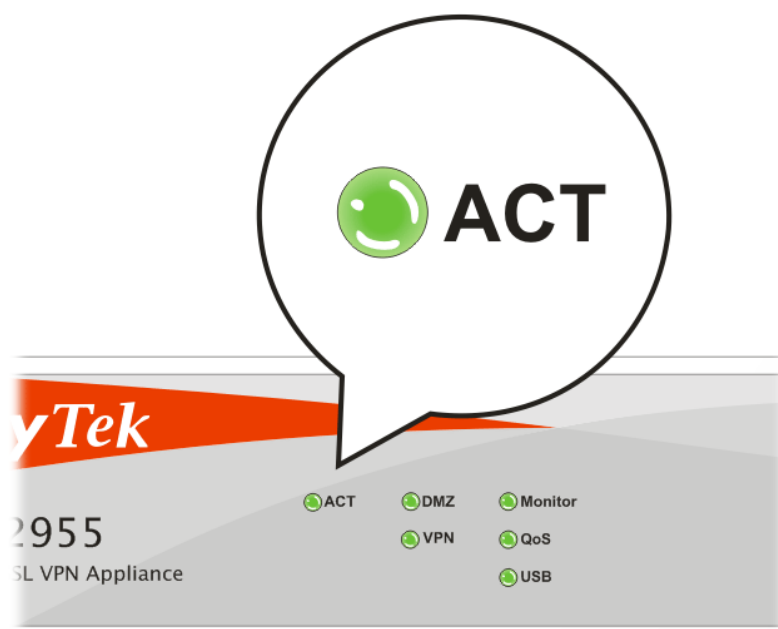
- Checking the hardware status.
- Checking the network connection settings on your computer.
- Pinging the router from your computer.
- Checking the ISP settings.
- Resetting the Router to Factory Default Settings.

If all above stages are done and the router still cannot run normally, it is the time for you to contact your dealer for advanced help.

4.1 Checking the Hardware Status

Follow the steps below to verify the hardware status.

1. Check the power line and WLAN/LAN cable connections.
Refer to “**2.1 Hardware Installation**” for details.
2. Turn on the router. Make sure the **ACT LED** blink once per second and the correspondent **LAN LED** is bright.



3. If not, it means that there is something wrong with the hardware status. Simply back to “**2.1 Hardware Installation**” to execute the hardware installation again. And then, try again.

4.2 Checking the Network Connection Settings on Your Computer

Sometimes the link failure occurs due to the wrong network connection settings. After trying the above section, if the link is still failed, please do the steps listed below to make sure the network connection settings is OK.

For Windows

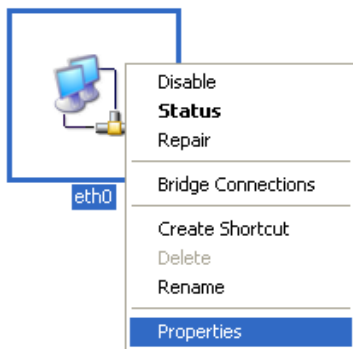


The example is based on Windows XP. As to the examples for other operation systems, please refer to the similar steps or find support notes in www.draytek.com.

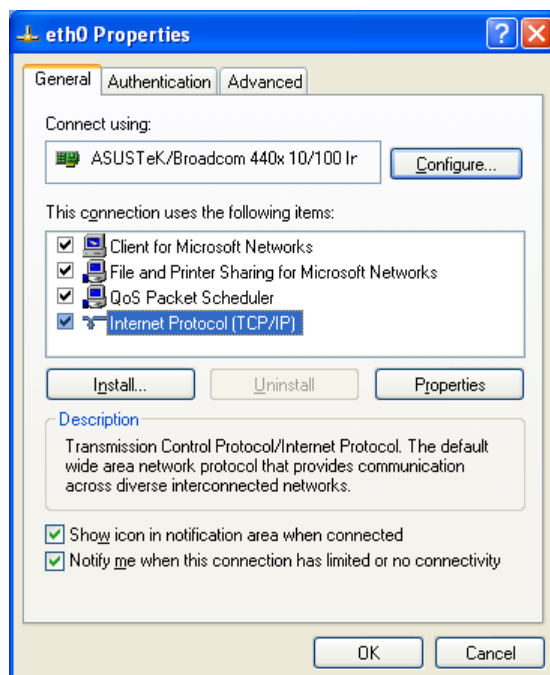
1. Go to **Control Panel** and then double-click on **Network Connections**.



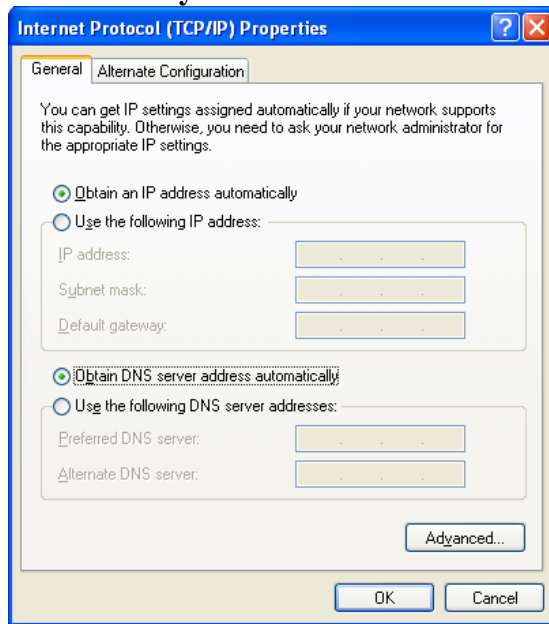
2. Right-click on **Local Area Connection** and click on **Properties**.



3. Select **Internet Protocol (TCP/IP)** and then click **Properties**.

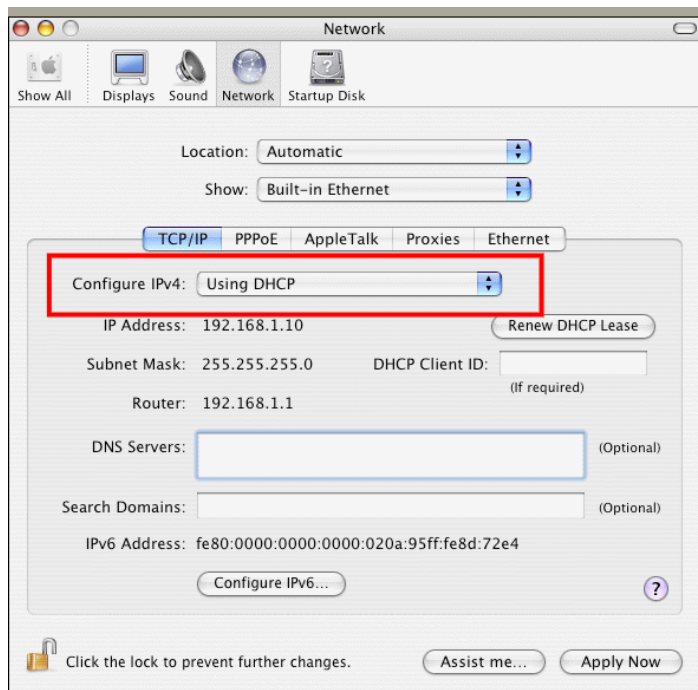


4. Select **Obtain an IP address automatically** and **Obtain DNS server address automatically**.



For MacOs

1. Double click on the current used MacOs on the desktop.
2. Open the **Application** folder and get into **Network**.
3. On the **Network** screen, select **Using DHCP** from the drop down list of Configure IPv4.



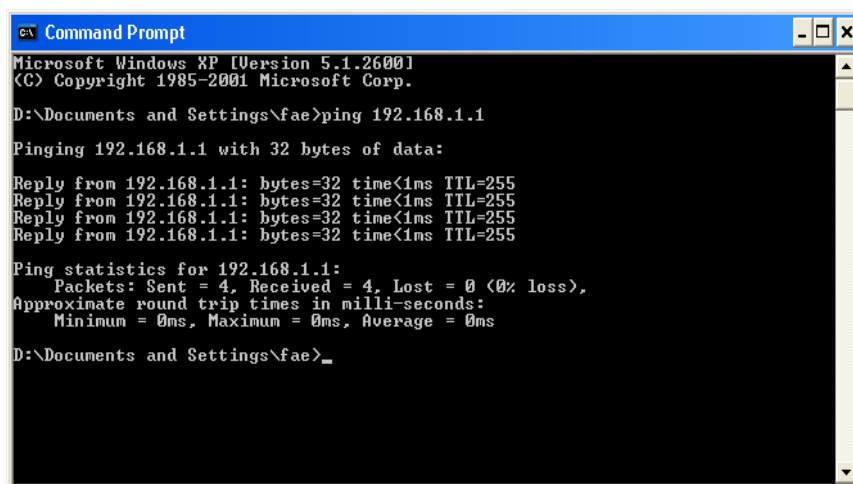
4.3 Pinging the Router from Your Computer

The default gateway IP address of the router is 192.168.1.1. For some reason, you might need to use “ping” command to check the link status of the router. **The most important thing is that the computer will receive a reply from 192.168.1.1.** If not, please check the IP address of your computer. We suggest you setting the network connection as **get IP automatically**. (Please refer to the section 4.2)

Please follow the steps below to ping the router correctly.

For Windows

1. Open the **Command Prompt** window (from **Start menu> Run**).
2. Type **command** (for Windows 95/98/ME) or **cmd** (for Windows NT/2000/XP/Vista). The DOS command dialog will appear.



```
Microsoft Windows XP [Version 5.1.2600]
(C) Copyright 1985-2001 Microsoft Corp.

D:\Documents and Settings\fae>ping 192.168.1.1

Pinging 192.168.1.1 with 32 bytes of data:

Reply from 192.168.1.1: bytes=32 time<1ms TTL=255
Reply from 192.168.1.1: bytes=32 time<1ms TTL=255
Reply from 192.168.1.1: bytes=32 time<1ms TTL=255
Reply from 192.168.1.1: bytes=32 time<1ms TTL=255

Ping statistics for 192.168.1.1:
    Packets: Sent = 4, Received = 4, Lost = 0 (0% loss),
    Approximate round trip times in milli-seconds:
        Minimum = 0ms, Maximum = 0ms, Average = 0ms

D:\Documents and Settings\fae>_
```

3. Type **ping 192.168.1.1** and press [Enter]. If the link is OK, the line of “**Reply from 192.168.1.1:bytes=32 time<1ms TTL=255**” will appear.
4. If the line does not appear, please check the IP address setting of your computer.

For MacOs (Terminal)

1. Double click on the current used MacOs on the desktop.
2. Open the **Application** folder and get into **Utilities**.
3. Double click **Terminal**. The Terminal window will appear.
4. Type **ping 192.168.1.1** and press [Enter]. If the link is OK, the line of “**64 bytes from 192.168.1.1: icmp_seq=0 ttl=255 time=xxxx ms**” will appear.

```

Terminal — bash — 80x24
Last login: Sat Jan  3 02:24:18 on ttys1
Welcome to Darwin!
Vigor10:~ draytek$ ping 192.168.1.1
PING 192.168.1.1 (192.168.1.1): 56 data bytes
64 bytes from 192.168.1.1: icmp_seq=0 ttl=255 time=0.755 ms
64 bytes from 192.168.1.1: icmp_seq=1 ttl=255 time=0.697 ms
64 bytes from 192.168.1.1: icmp_seq=2 ttl=255 time=0.716 ms
64 bytes from 192.168.1.1: icmp_seq=3 ttl=255 time=0.731 ms
64 bytes from 192.168.1.1: icmp_seq=4 ttl=255 time=0.72 ms
^C
--- 192.168.1.1 ping statistics ---
5 packets transmitted, 5 packets received, 0% packet loss
round-trip min/avg/max = 0.697/0.723/0.755 ms
Vigor10:~ draytek$

```

4.4 Checking the ISP Settings

Open **WAN >> Internet Access** page and then check whether the ISP settings are set correctly. Click **Details Page** of WAN1/WAN2 to review the settings that you configured previously.

WAN >> Internet Access

Index	Display Name	Physical Mode	Access Mode
WAN1		Ethernet	Static or Dynamic IP Details Page
WAN2		Ethernet	None Details Page PPPoE Static or Dynamic IP PPTP/L2TP

For PPPoE Users

1. Check if the **Enable** option is selected.
2. Check if **Username** and **Password** are entered with correct values that you got from your **ISP**.

WAN >> Internet Access

WAN 1

PPPoE Client Mode
 Enable Disable

ISP Access Setup
 Username: 84005676@hinet.net
 Password: ●●●●●●

Index(1-15) in **Schedule** Setup:
 => [] , [] , [] , []

WAN Connection Detection
 Mode: ARP Detect
 Ping IP: []
 TTL: []

MTU: 1442 (Max: 1492)

PPP/MP Setup
 PPP Authentication: PAP or CHAP
 Idle Timeout: -1 second(s)

IP Address Assignment Method (IPCP)
 WAN IP Alias: []
 Fixed IP: Yes No (Dynamic IP)
 Fixed IP Address: []

Default MAC Address
 Specify a MAC Address
 MAC Address: 00 . 50 . 7F . C7 . 86 . 89

OK Cancel

For Static/DHCP Users

1. Check if the **Enable** option is selected.

WAN >> Internet Access

WAN 1

Static or Dynamic IP (DHCP Client) <input checked="" type="radio"/> Enable <input type="radio"/> Disable	WAN IP Network Settings <input type="button" value="WAN IP Alias"/>
Keep WAN Connection <input type="checkbox"/> Enable PING to keep alive PING to the IP <input type="text"/> PING Interval <input type="text" value="0"/> minute(s)	<input checked="" type="radio"/> Obtain an IP address automatically Router Name <input type="text"/> * Domain Name <input type="text"/> * * : Required for some ISPs <input type="radio"/> Specify an IP address IP Address <input type="text"/> Subnet Mask <input type="text"/> Gateway IP Address <input type="text"/> DNS Server IP Address Primary IP Address <input type="text"/> Secondary IP Address <input type="text"/>
WAN Connection Detection Mode <input type="text" value="ARP Detect"/> Ping IP <input type="text"/> TTL: <input type="text"/>	<input checked="" type="radio"/> Default MAC Address <input type="radio"/> Specify a MAC Address MAC Address: <input type="text" value="00"/> <input type="text" value=".50"/> <input type="text" value="-7F"/> <input type="text" value":c7"=""/> <input type="text" value=".86"/> <input type="text" value=".89"/>
MTU <input type="text" value="1442"/> (Max:1500)	
RIP Protocol <input type="checkbox"/> Enable RIP	

2. Check if **WAN IP Network Settings** is set appropriately.
3. Check if **IP Address**, **Subnet Mask** and **Gateway** are set correctly (must identify with the values from your ISP) if you choose **Specify an IP address**.

For PPTP/L2TP Users

1. Check if the **Enable** option for **PPTP Link** is selected.

WAN >> Internet Access

WAN 1

PPTP/L2TP Client Mode <input checked="" type="radio"/> Enable PPTP <input type="radio"/> Enable L2TP <input type="radio"/> Disable Server Address <input type="text" value="10.0.0.138"/> Specify Gateway IP Address <input type="text"/>	PPP Setup PPP Authentication <input type="text" value="PAP or CHAP"/> Idle Timeout <input type="text" value="-1"/> second(s) IP Address Assignment Method (IPCP) <input type="button" value="WAN IP Alias"/> Fixed IP: <input type="radio"/> Yes <input checked="" type="radio"/> No (Dynamic IP) Fixed IP Address <input type="text"/>
ISP Access Setup Username <input type="text"/> Password <input type="text"/> Index(1-15) in Schedule Setup: => <input type="text"/> , <input type="text"/> , <input type="text"/> , <input type="text"/>	WAN IP Network Settings <input checked="" type="radio"/> Obtain an IP address automatically <input type="radio"/> Specify an IP address IP Address <input type="text" value="10.0.0.150"/> Subnet Mask <input type="text" value="255.0.0.0"/>
MTU <input type="text" value="1442"/> (Max:1460)	

2. Check if **Server Address, Username, Password** and **WAN IP** address are set correctly (must identify with the values from your ISP).

4.5 Resetting the Router to Factory Default Settings

Sometimes, a wrong connection can be improved by returning to the default settings. Try to reset the router by software or hardware.



Warning: After pressing **factory default setting**, you will lose all settings you did before. Make sure you have recorded all useful settings before you pressing. The password of factory default is null.

Software Reset

You can reset the router to factory default via Web page.

Go to **System Maintenance** and choose **Reboot System** on the web page. The following screen will appear. Choose **Using factory default configuration** and click **OK**. After few seconds, the router will return all the settings to the factory settings.

System Maintenance >> Reboot System

Reboot System

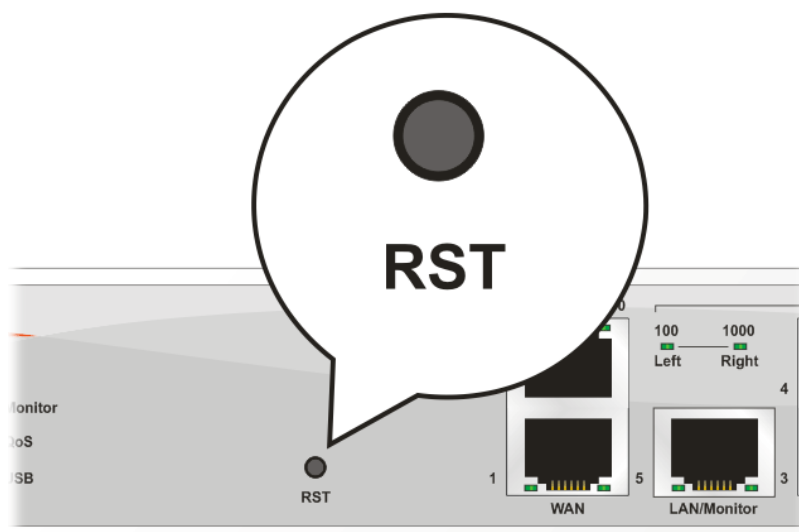
Do You want to reboot your router ?

- Using current configuration
- Using factory default configuration

OK

Hardware Reset

While the router is running (ACT LED blinking), press the **RST** button and hold for more than 5 seconds. When you see the **ACT** LED blinks rapidly, please release the button. Then, the router will restart with the default configuration.



After restore the factory default setting, you can configure the settings for the router again to fit your personal request.

4.6 Contacting Your Dealer

If the router still cannot work correctly after trying many efforts, please contact your dealer for further help right away. For any questions, please feel free to send e-mail to support@draytek.com.