



RedRapid™ X WIRELESS MODEM ROUTER



Quick Installation Guide (DN-7060)

1. Product Introduction

Congratulations on purchasing this Wireless N ADSL2/2+ Router. This router is a cost-effective ADSL2+ router, with the combination of an ADSL2+ modem, router, Ethernet network switch and wireless access point, you can surf the Internet through your ADSL2/2+ broadband connection without investing other devices.

This router can support downstream transmission rates of up to 24Mbps and upstream transmission rates of up to 1Mbps. It supports PPPoA (RFC 2364 - PPP over ATM Adaptation Layer 5), RFC 1483/2684 encapsulation over ATM (bridged or routed) and PPP over Ethernet (RFC 2516) to establish a connection with ISP. The product also supports VC-based and LLC-based multiplexing.

With built-in IEEE 802.11b/g/Draft-N wireless network capability, all computers and wireless-enabled network devices (including PDA, cellular phone, game console, and more!) can connect to this ADSL router without additional cabling. New Draft-N wireless capability also gives you the highest speed of wireless experience ever! With a compatible wireless card installed in your PC, you can transfer file for up to 300Mbps (transfer data rate)! The radio coverage is also doubled, so don't worry if your office or house is really big!

Utilizing the web management interface, users can easily configure the various functions of the router including DHCP server, NAT, virtual server, DMZ, access control, IP/MAC/Application/URL filter, Firewall, PPTP/IPSec/L2TP pass-through, DDNS, UPnP, Wireless and etc.

This router is a high performance and high-speed device that provides a full rate of ADSL2+ standard with the superb reliability and a complete solution for home and office application.

2. Minimum Requirements

The following devices are necessary to configure and use the ADSL2+

Router:

- A PC with Pre-installed Ethernet Adapter (Required) and a Web-Browser (Internet Explorer 4.0 or higher)
- RJ-45 Ethernet crossover cable (Included in the package)
- RJ-11 (ADSL Ready) phone Line

3. Product Package

This package contains the following components:

- One ADSL2/2+ Router (Annex A or B)
- One Power Adapter
- One RJ-45 Ethernet Cable (100 cm)
- One RJ-11 Telephone Line (180 cm)
- One Quick Installation Guide
- One CD-ROM (Including all the software utilities, drivers and User's Manual)

4. Install ADSL Router

Step 1. Connect the ADSL Line

Connect the router to your ADSL cable through the supplied RJ-11 telephone line.

Step 2. Connect the router to your LAN network

Connect the router to your PC, hub or switch by attached the Ethernet cable to the LAN port of the router.

Step 3. Connect the Power Adapter to the Router

Connect the power adapter to the power jack on the rear panel of router.

Step4: Check the ADSL LED on the Router

The ADSL LED will be ON if the router is connected to the ADSL cable and receives the ADSL signals successfully. If the LED is blinking, please contact with your ISP (Internet Service Provider) to check the problem.

Note: You must use the power adapter shipped along with the router, do NOT use any other power adapter from other sources.

5. Setup Wizard

This router provides a Setup Wizard tool for user to configure the ADSL settings. This wizard collects some ISP's ADSL settings so that user can easy to configure the router's ADSL settings by only selecting the ISP vendor from the wizard.

If you cannot find your ISP from the list in the wizard, please manually set the ISP information through the wizard.

Getting Started

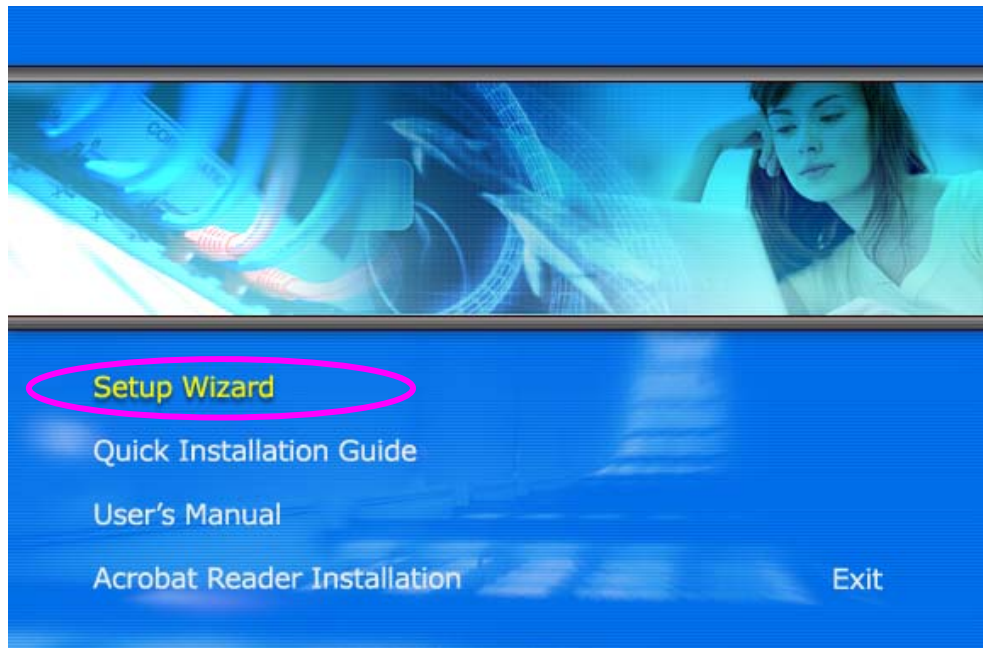
Before you start, please check the following items:

1. Please make sure that you have connected the ADSL cable to the router correctly. When the ADSL cable is worked normally, the ADSL LED will be on.
2. Uninstall all of dial up programs if you have installed previously for the USB modem or other dial up devices.
3. It is recommended to configure the router through the Ethernet cable before you have set the wireless functions correctly.

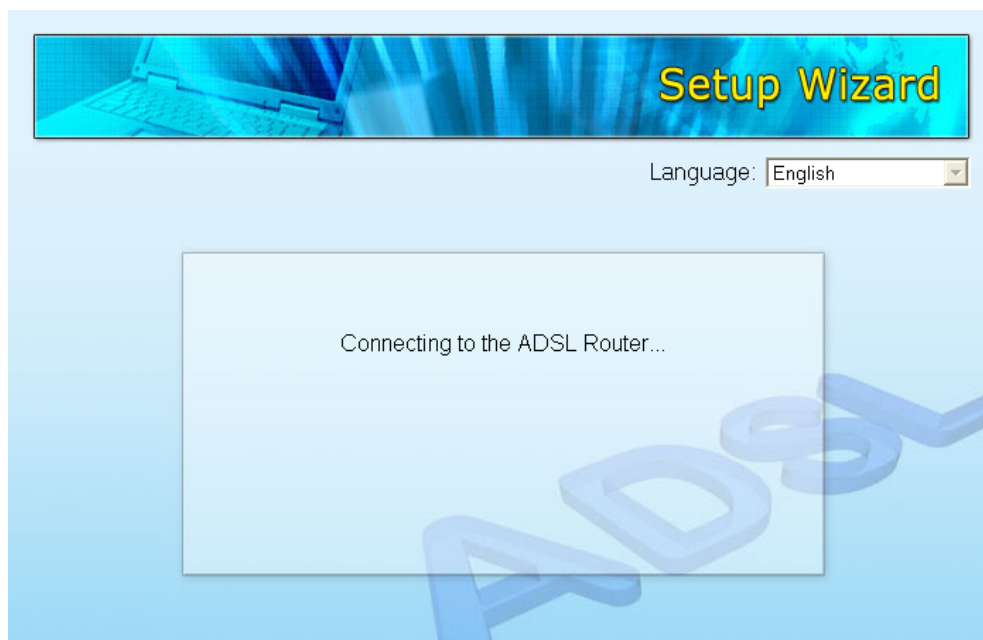
This wizard can be run in Windows 98SE/Me/2000/XP/Vista. The following procedures are operated in Windows XP. (Procedures are similar for Windows 98SE/Me/2000/Vista.)

1. Insert the CD shipped along with the ADSL router into your CD-ROM drive. The Autorun.exe program should be executed automatically. If not, run Autorun.exe manually from "Autorun" folder in the CD.

2. The following screen will be displayed. Click "Setup Wizard".



3. This wizard will be executed and try to search for the ADSL Router. If the ADSL Router can be searched successfully, the wizard will guide you to step 5.



4. If the router cannot be found, please enter the IP Address and the Password of the router to search again. Click “Next” to continue.



5. The wizard will automatically select the country where you are in by checking the language of the operating system in your computer and skip to the “Select ISP” page. Please select the ISP.

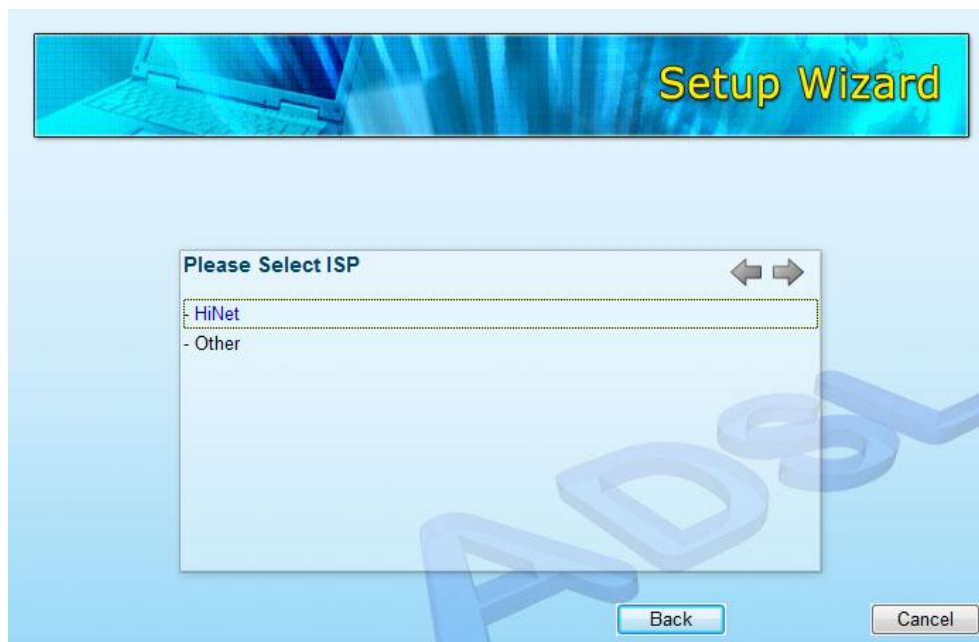
If you cannot find the ISP, please click “Other” to reselect the country or manual configure the ISP information.



5.1 Automatically Set ISP

If you can find the ISP from the wizard, please follow the procedures below to let the wizard set the ISP settings automatically.

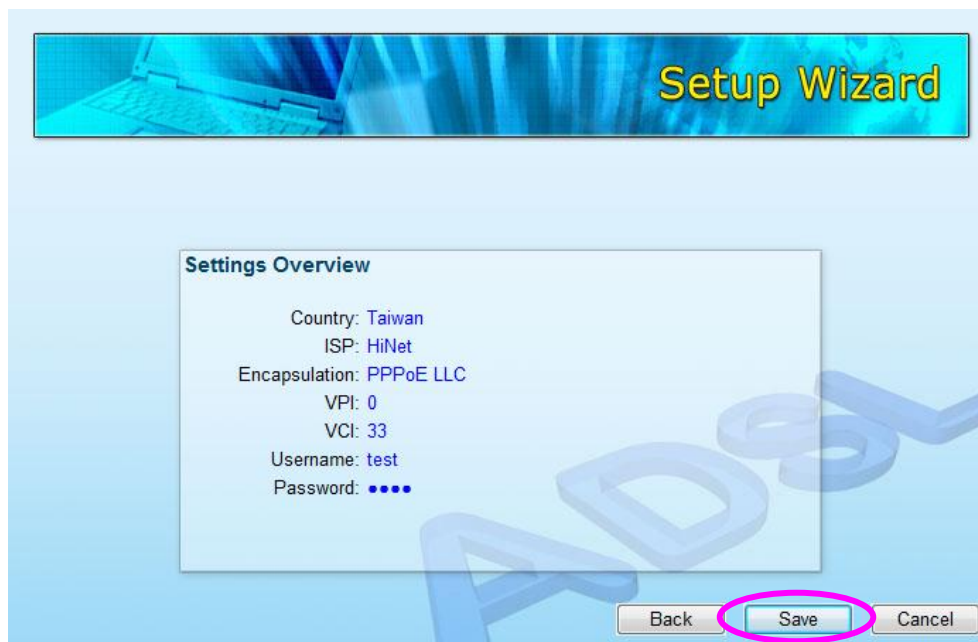
1. Please select the ISP (Internet Service Provider) of your ADSL service.



2. Enter the Username and Password which your ISP has provided to you if it is needed. Click "Next".



3. Click "Save" to save the settings and reboot the router.



4. After saving and rebooting the router, the ISP settings are all finished. This wizard will then help to set your computer to obtain IP Address from the router automatically.

Note1: To use the router to get into the Internet, the IP Address of each PC has to be set in the same network segment as the router. This wizard will help to set the proper IP Address to your computer.

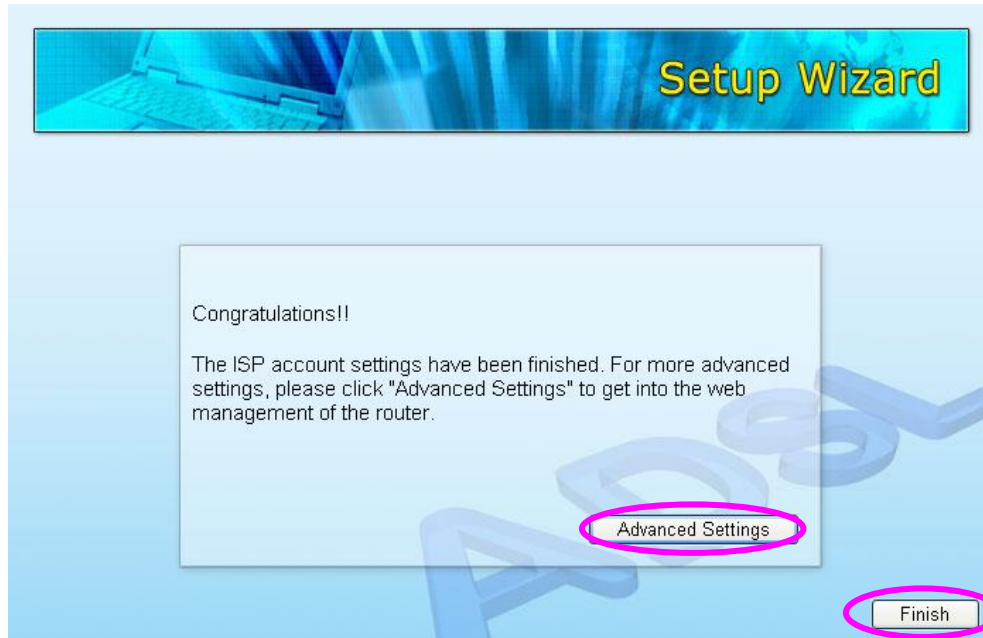
Note2: By default, the router's DHCP Server is enabled. If it is disabled before running the wizard, the wizard will enable the DHCP Server of the router automatically.



5. The wizard will try to connect to the ISP you have selected. If the connection is failed, please run the wizard to select the ISP again.



6. If you can successfully connect to the ISP, you will see below page. If you want to configure more settings, please click "Advanced Settings" to get into the web management of the router or click "Finish" to close the wizard.



5.2 Manually Set ISP

If you cannot find the ISP from the wizard, please follow the procedures below to set the ISP settings manually.

Before configuring the ISP manually, please check with your ISP (Internet Service Provider) what kind of the service is provided such as PPPoE, PPPoA or RFC1483/2684. Gather the information as illustrated in the following table and keep it for reference.

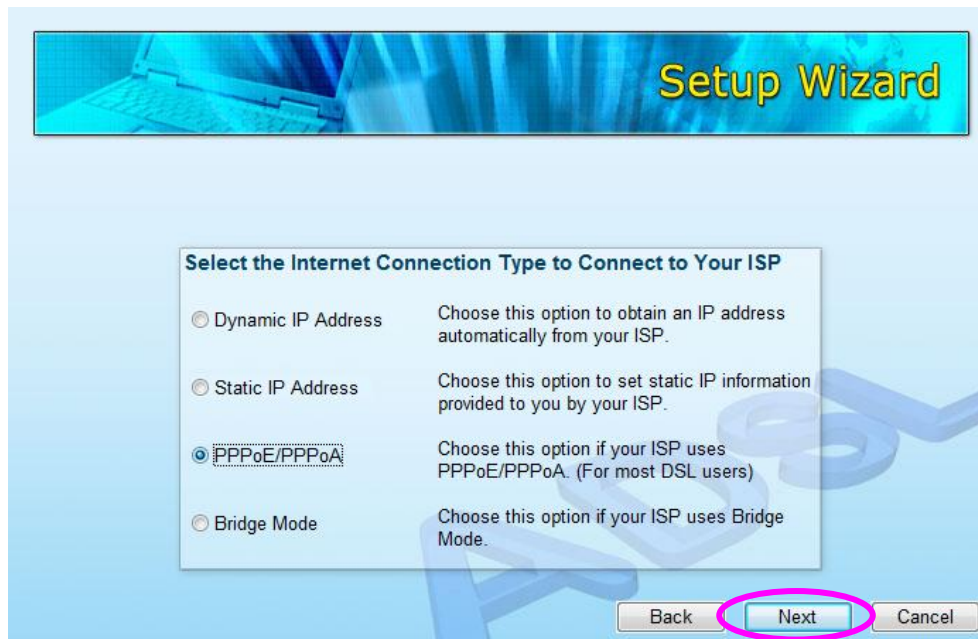
PPPoE	VPI/VCI, VC-based/LLC-based multiplexing, Username, Password (and Service Name).
PPPoA	VPI/VCI, VC-based/LLC-based multiplexing, Username, Password.
RFC1483 Bridged	VPI/VCI, VC-based/LLC-based multiplexing to use Bridged Mode.
RFC1483 Routed	VPI/VCI, VC-based/LLC-based multiplexing, IP Address, Subnet Mask, Gateway Address, and Domain Name System (DNS) IP Address (It is a fixed IP Address).

1. Please select "Other".

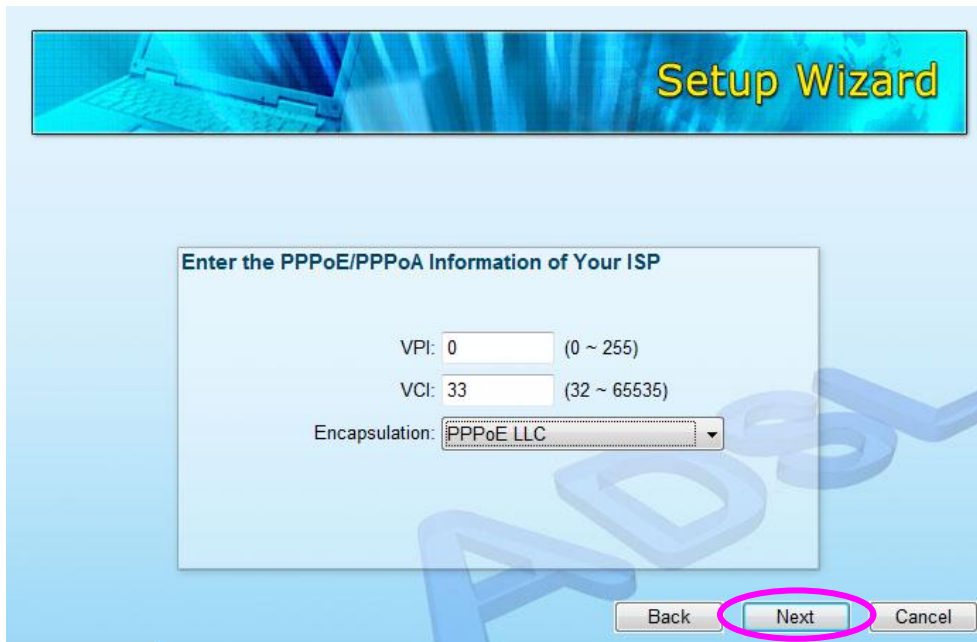


2. Please check with your ISP the connection type of the ADSL line. Select the Connection Type and click “Next”.

Note: The wizard will automatically select the country where you are in by checking the language of the operating system in your computer and skip to the “Select ISP” page. If you want to change the country, please click “Back” from this page.



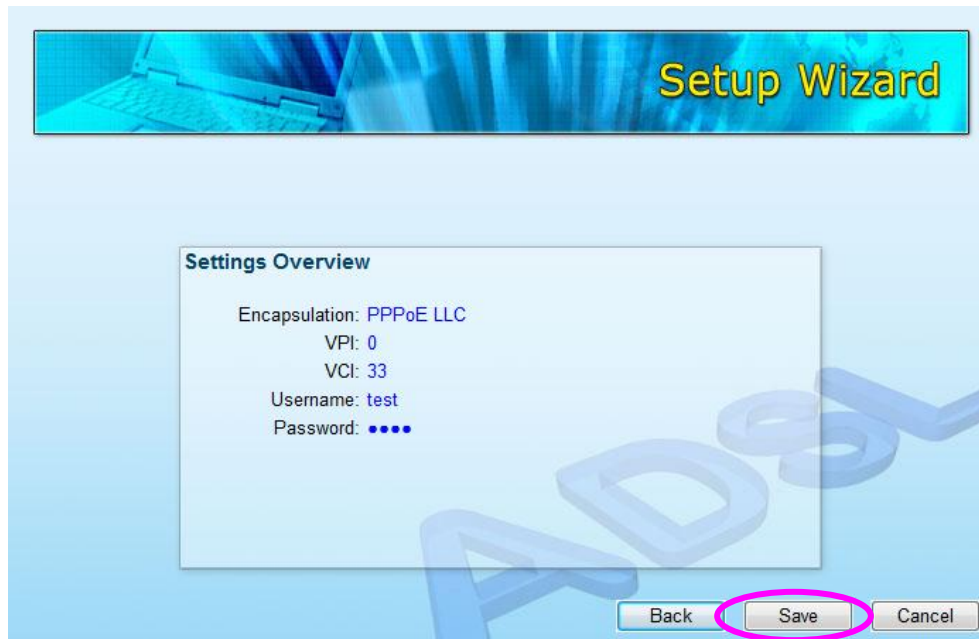
3. Input the VPI, VCI and Encapsulation data supplied by your ISP. If the Connection Type is “Static IP Address”, you have to input the IP Address information supplied by your ISP. To know more about the explanation of each setting, please refer to Section 5.2.2 in the manual.



4. Enter the Username and Password which your ISP has provided to you if it is needed. Click "Next".



5. Click "Save" to save the settings and reboot the router.



6. After saving and rebooting the router, the ISP settings are all finished. This wizard will then help to set your computer to obtain IP Address from the router automatically.

Note1: To use the router to get into the Internet, the IP Address of each PC has to be set in the same network segment as the router. This wizard will help to set the proper IP Address to your computer.

Note2: By default, the router's DHCP Server is enabled. If it is disabled before running the wizard, the wizard will enable the DHCP Server of the router automatically.



7. The wizard will try to connect to the ISP you have selected. If the connection is failed, please run the wizard to select the ISP again.



8. If you can successfully connect to the ISP, you will see below page. If you want to configure more settings, please click "Advanced Settings" to get into the web management of the router or click "Finish" to close the wizard.

