



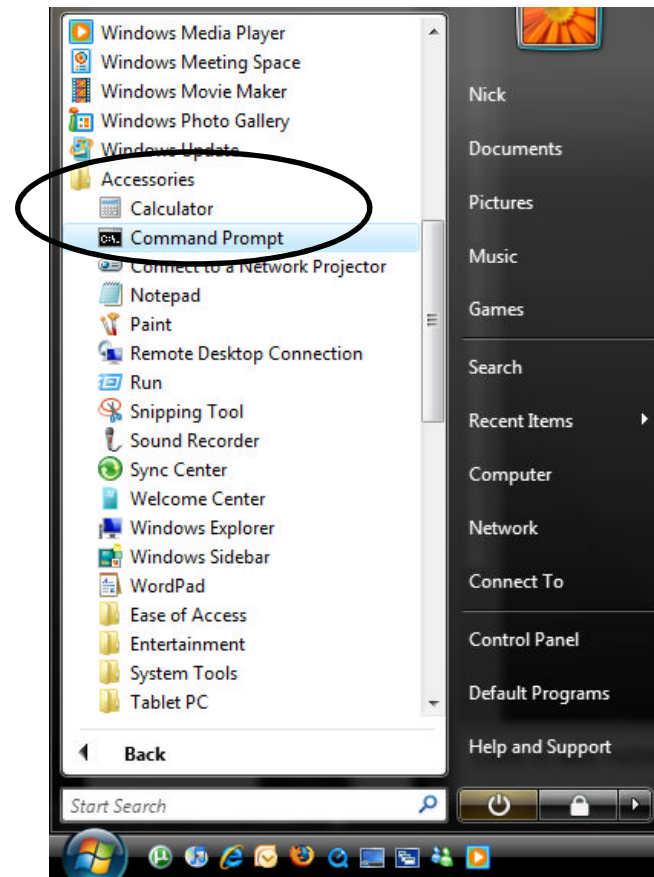
# **BWRG1000 and BWRG500**

Configuring the Bountiful Router with a DSL  
modem, Gateway or an Access Point

# Obtaining Network Information

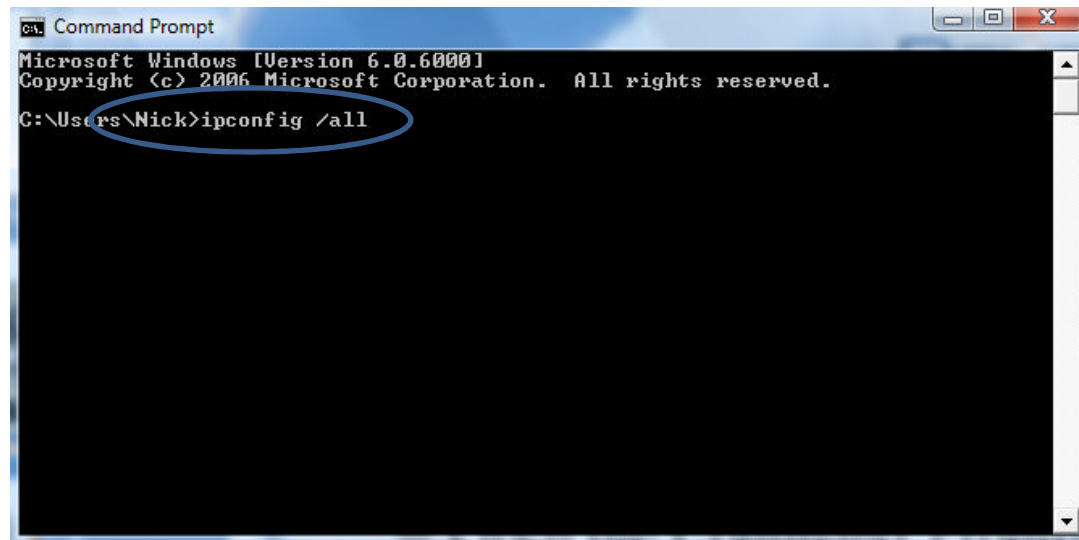
Open Command Prompt by clicking on the start menu opening up the Accessories folder and clicking Command Prompt

Click at the bottom left of your screen to bring up your start menu



# Obtaining Network Information

Type in `ipconfig /all`

A screenshot of a Windows Command Prompt window. The title bar reads "Command Prompt". The text inside the window shows the Microsoft Windows version and copyright information, followed by the command `C:\Users\Nick>ipconfig /all` which has been entered and is circled in blue. The rest of the window is black with no output visible.

```
Command Prompt
Microsoft Windows [Version 6.0.6000]
Copyright (c) 2006 Microsoft Corporation. All rights reserved.
C:\Users\Nick>ipconfig /all
```

# Obtaining Network Information

Write down:

IP address

Subnetmask

Default gateway

DNS Servers (1)

DNS Servers (2)

```
Command Prompt
Microsoft Windows [Version 6.0.6000]
Copyright (c) 2006 Microsoft Corporation. All rights reserved.

C:\Users\Nick>ipconfig /all

Windows IP Configuration

    Host Name . . . . . : Nick-PC
    Primary Dns Suffix . . . . . :
    Node Type . . . . . : Hybrid
    IP Routing Enabled. . . . . : No
    WINS Proxy Enabled. . . . . : No

Wireless LAN adapter Wireless Network Connection:

    Connection-specific DNS Suffix . :
    Description . . . . . : My Essential G USB Adapter
    Physical Address. . . . . : 00-17-3F-34-D2-37
    DHCP Enabled. . . . . : Yes
    Autoconfiguration Enabled . . . . : Yes
    Link-local IPv6 Address . . . . . : fe80::b59a:78cd:832a:ad39%10
    IPv4 Address. . . . . : 192.168.100.16(Preferred)
    Subnet Mask . . . . . : 255.255.255.0
    Lease Obtained. . . . . : Thursday, November 01, 2007
    Lease Expires . . . . . : Thursday, November 01, 2007
    Default Gateway . . . . . : 192.168.100.2
    DHCP Server . . . . . : 192.168.100.2
    DHCPv6 IAID . . . . . : 218109759
    DNS Servers . . . . . : 204.130.255.3
    . . . . . : 64.122.32.71
    NetBIOS over Tcpip. . . . . : Enabled
```

# Setting up the Hardware

Plug Power supply into router  
and into wall



# Setting up the Hardware

Connect Ethernet cable into the LAN port of the Bountiful Router



Connect other end of Ethernet cable into your computer



# Setting up the Hardware

WLAN should be blinking  
after 20 seconds

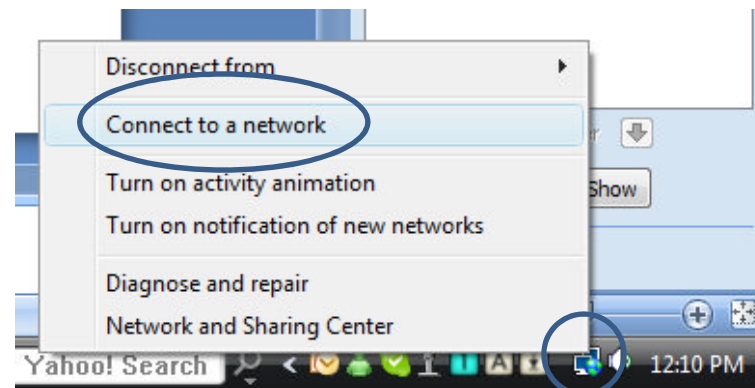
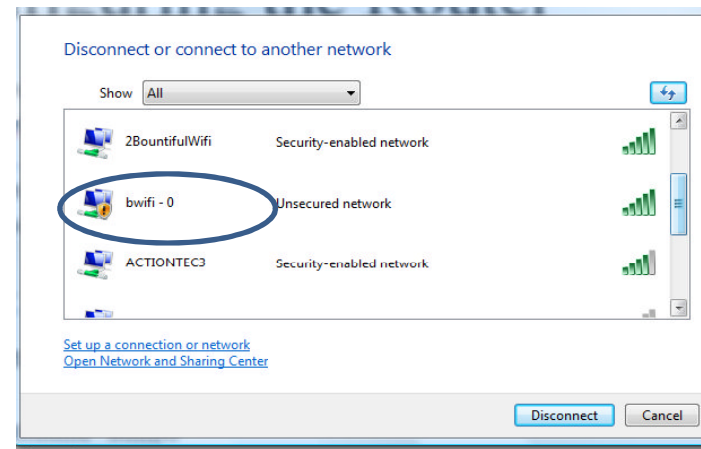


Ensure Power light and  
system status light is on  
(solid)



# Accessing Web Interface

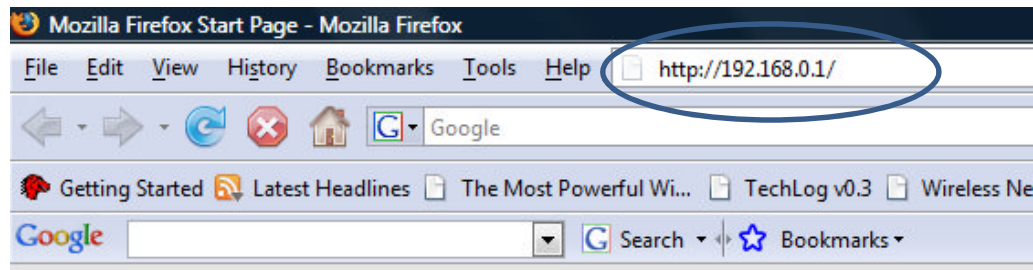
View wireless networks  
and connect to bwifi - 0  
Or the SSID assigned to  
router





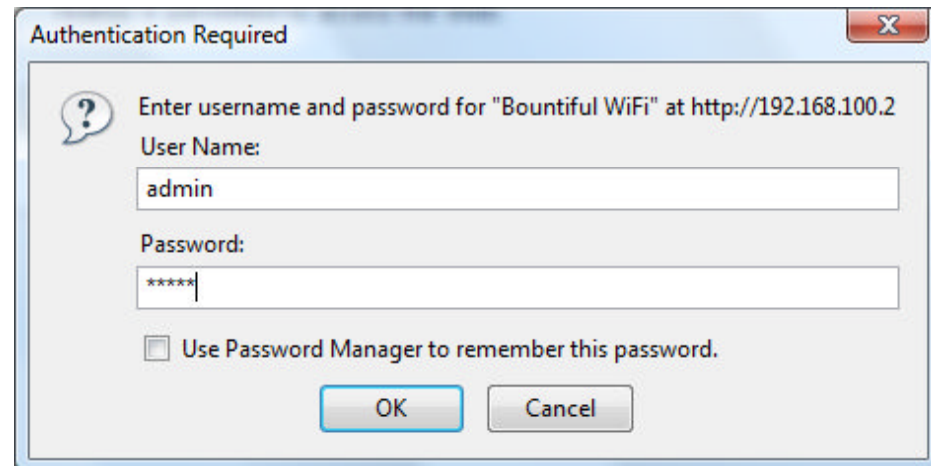
# Accessing Web Interface

Open an internet browser and  
type in the router IP address  
(default=192.168.0.1)  
Or the IP address assigned to  
the router



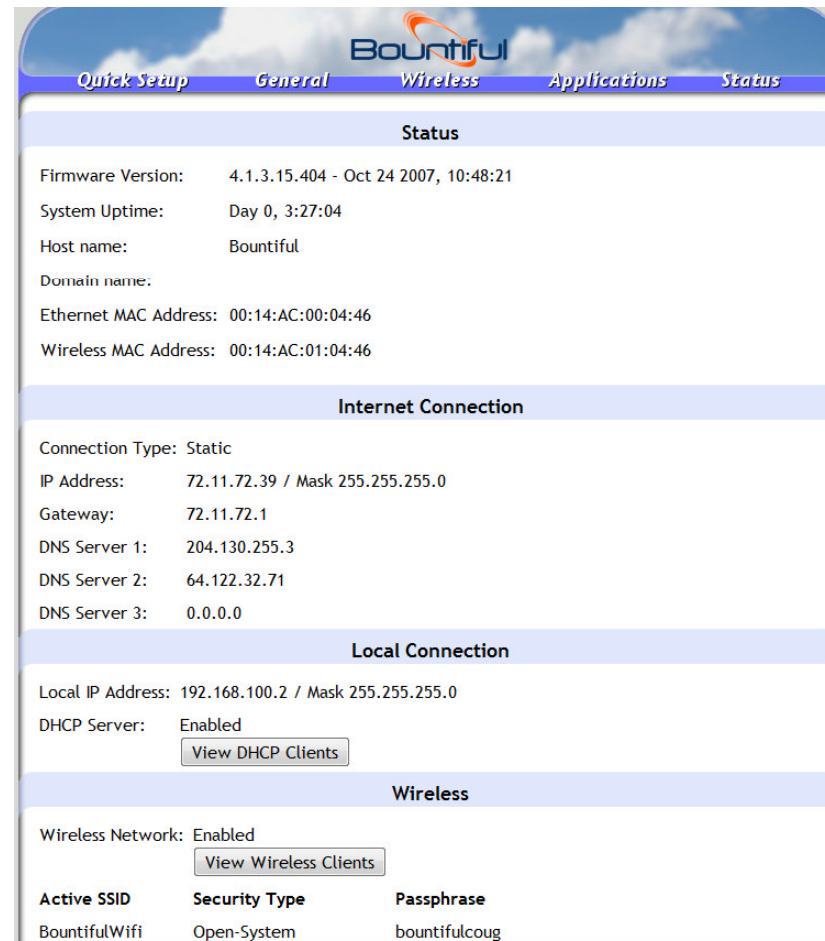
# Accessing Web Interface

Type in user name and  
password  
default username=admin  
password =admin  
Or the password  
assigned to the router



# Accessing Web Interface

This is the  
Bountiful Web  
Interface

A screenshot of the Bountiful web interface. The page has a blue header with the Bountiful logo and navigation tabs: "Quick Setup", "General", "Wireless", "Applications", and "Status". The "Status" tab is selected. The main content area is divided into sections: "Status", "Internet Connection", "Local Connection", and "Wireless".

Status		
Firmware Version:	4.1.3.15.404 - Oct 24 2007, 10:48:21	
System Uptime:	Day 0, 3:27:04	
Host name:	Bountiful	
Domain name:		
Ethernet MAC Address:	00:14:AC:00:04:46	
Wireless MAC Address:	00:14:AC:01:04:46	

Internet Connection	
Connection Type:	Static
IP Address:	72.11.72.39 / Mask 255.255.255.0
Gateway:	72.11.72.1
DNS Server 1:	204.130.255.3
DNS Server 2:	64.122.32.71
DNS Server 3:	0.0.0.0

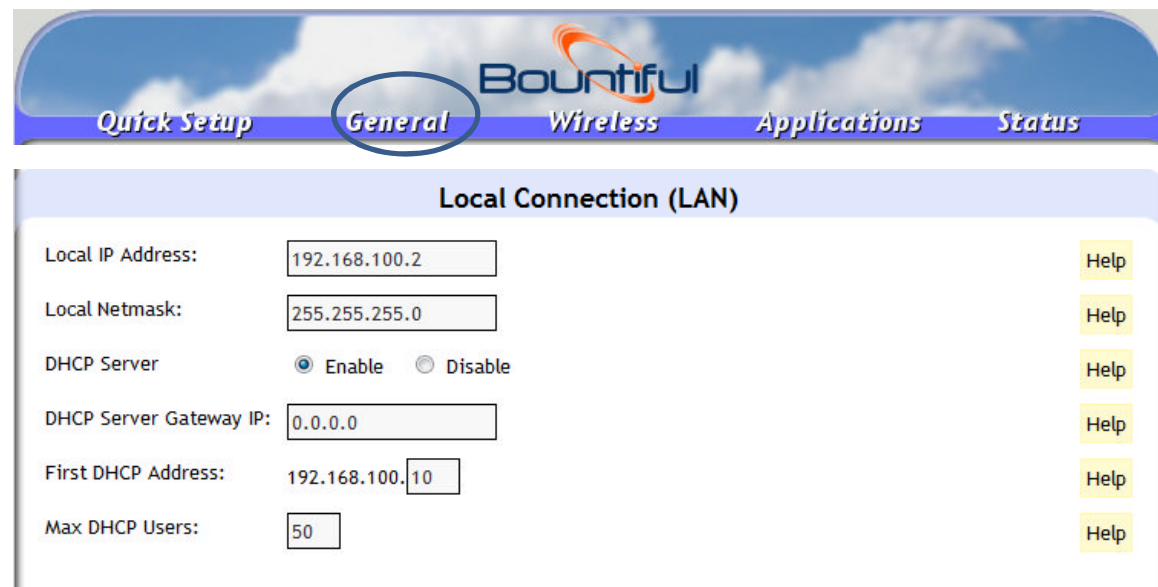
Local Connection	
Local IP Address:	192.168.100.2 / Mask 255.255.255.0
DHCP Server:	Enabled
	<a href="#">View DHCP Clients</a>

Wireless		
Wireless Network:	Enabled	
	<a href="#">View Wireless Clients</a>	
Active SSID	Security Type	Passphrase
BountifulWifi	Open-System	bountifulcoug

# Configuring the Router

Click on the General tab and scroll down to the Local Connection (LAN)



The screenshot shows the Bountiful router configuration interface. At the top, there is a navigation bar with tabs: *Quick Setup*, *General* (highlighted with a blue circle), *Wireless*, *Applications*, and *Status*. Below the navigation bar, the main content area is titled "Local Connection (LAN)". It contains several configuration fields:

Local IP Address:	<input type="text" value="192.168.100.2"/>	<a href="#">Help</a>
Local Netmask:	<input type="text" value="255.255.255.0"/>	<a href="#">Help</a>
DHCP Server:	<input checked="" type="radio"/> Enable <input type="radio"/> Disable	<a href="#">Help</a>
DHCP Server Gateway IP:	<input type="text" value="0.0.0.0"/>	<a href="#">Help</a>
First DHCP Address:	<input type="text" value="192.168.100.10"/>	<a href="#">Help</a>
Max DHCP Users:	<input type="text" value="50"/>	<a href="#">Help</a>

# Configuring the Router

Take out the network configuration list and make note of default gateway subnet

```

C:\> Command Prompt
Microsoft Windows [Version 6.0.6000]
Copyright (c) 2006 Microsoft Corporation. All rights reserved.

C:\Users\Nick>ipconfig /all

Windows IP Configuration

    Host Name . . . . . : Nick-PC
    Primary Dns Suffix . . . . . :
    Node Type . . . . . : Hybrid
    IP Routing Enabled. . . . . : No
    WINS Proxy Enabled. . . . . : No

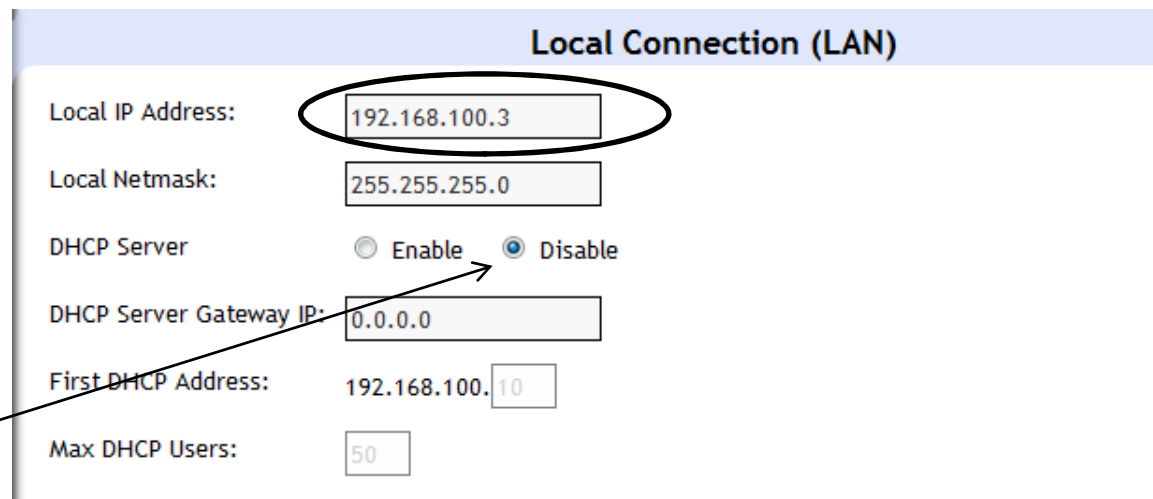
Wireless LAN adapter Wireless Network Connection:

    Connection-specific DNS Suffix . . . :
    Description . . . . . : My Essential G USB Adapter
    Physical Address. . . . . : 00-17-3F-34-D2-37
    DHCP Enabled. . . . . : Yes
    Autoconfiguration Enabled . . . . . : Yes
    Link-local IPv6 Address . . . . . : fe80::b59a:78cd:832a:ad39%10
    IPv4 Address. . . . . : 192.168.100.16(Preferred)
    Subnet Mask . . . . . : 255.255.255.0
    Lease Obtained. . . . . : Thursday, November 01, 2007
    Lease Expires . . . . . : Thursday, November 01, 2007
    Default Gateway . . . . . : 192.168.100.2
    DHCP Server . . . . . : 192.168.100.2
    DHCPv6 IAID . . . . . : 218109759
    DNS Servers . . . . . : 204.130.255.3
    . . . . . : 64.122.32.71
    NetBIOS over Tcpip. . . . . : Enabled
  
```

# Configuring the Router

Type in Local IP address using the same subnet but with different ending

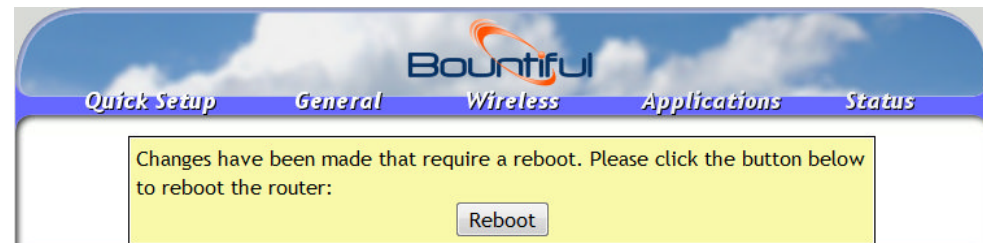
DHCP Server Disabled

A screenshot of a router's configuration page titled "Local Connection (LAN)". The page contains several fields: "Local IP Address" with the value "192.168.100.3" circled in black; "Local Netmask" with "255.255.255.0"; "DHCP Server" with radio buttons for "Enable" and "Disable", where "Disable" is selected; "DHCP Server Gateway IP" with "0.0.0.0"; "First DHCP Address" with "192.168.100.10"; and "Max DHCP Users" with "50". An arrow points from the text "DHCP Server Disabled" to the "Disable" radio button.

Local Connection (LAN)	
Local IP Address:	192.168.100.3
Local Netmask:	255.255.255.0
DHCP Server	<input type="radio"/> Enable <input checked="" type="radio"/> Disable
DHCP Server Gateway IP:	0.0.0.0
First DHCP Address:	192.168.100.10
Max DHCP Users:	50

# Configuring the Router

Scroll to the bottom of the page and submit the changes then Click reboot to reboot router

A rectangular button with a light gray gradient and a thin black border, containing the word "Submit" in a blue sans-serif font.

# Hardware Set up

The Ethernet Cable should be connect into the Ethernet port of the DSL modem and the LAN port of the Gateway or other router.

The Ethernet cable should be connected into the LAN port of the Bountiful Router





This now ends, configuring  
the Bountiful Router with a  
DSL modem, Gateway or  
Access Point